

# Chameleon 9 mm Single Layer

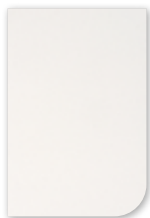
## Specifications

---



# Colours

The 9 mm PET felt of Chameleon 9 mm Single Layer is colored throughout. We have selected 23 colors, with strong representation in shades of gray and brown.



White  
P001



Dusty white  
P002



White marble  
P003



Calm grey  
P004



Rough grey  
P005



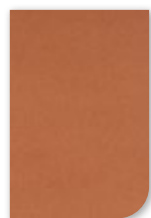
Black lava  
P006



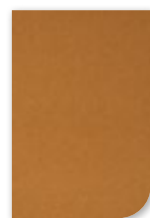
Flat white  
P007



Hare  
P008



Canyon  
P009



Turmeric  
P010



Rust  
P011



Tree bark  
P012



Magma  
P013



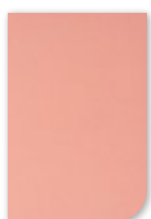
Polar ice  
P014



Light blue  
quartz  
P015



Dusk  
P016



Pink rose  
P017



Garnet  
P018



Iguana  
P019



Ocean green  
P020



Anthracite  
P021



Urban green  
P022

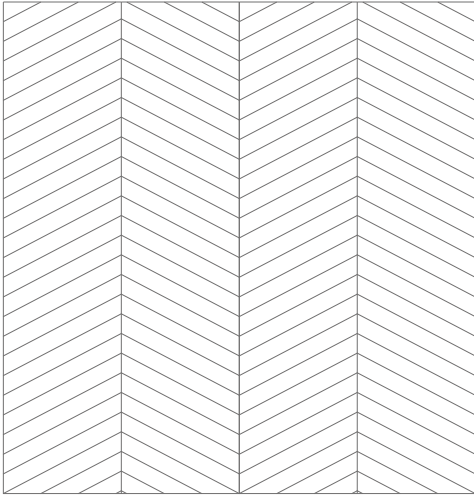


Shadow green  
P023

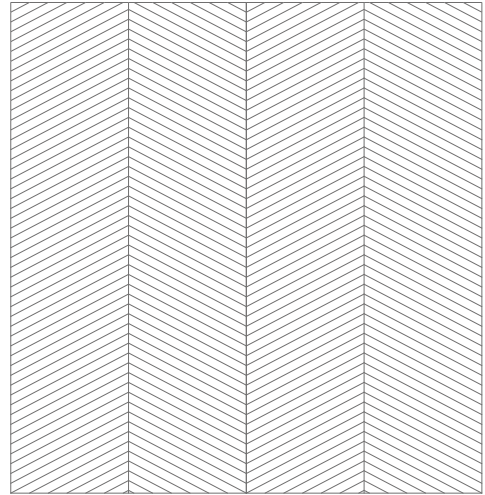
# Designs

Choice of eight different patterns. The panels are cut so that the seam transition from one panel to the next aligns perfectly with the pattern.

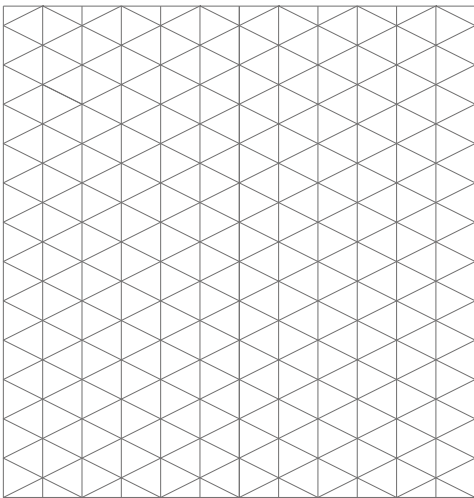
A01



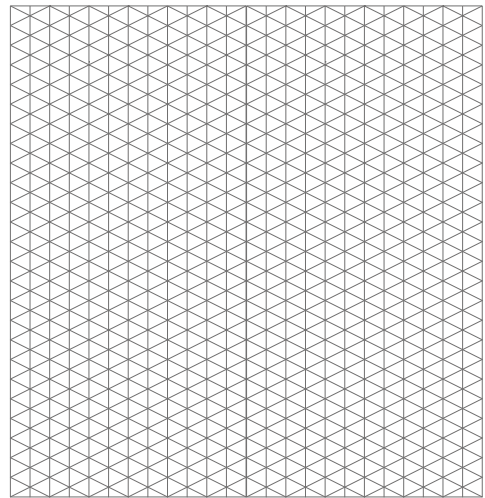
A02



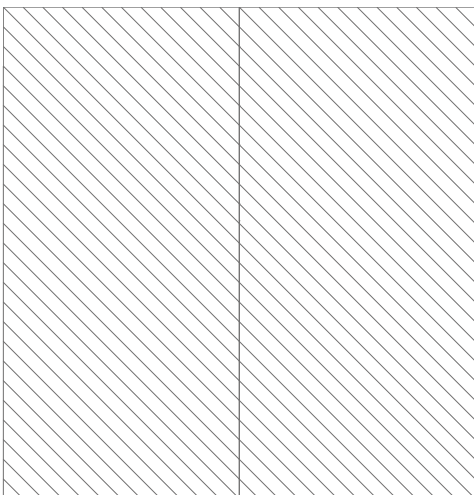
A03



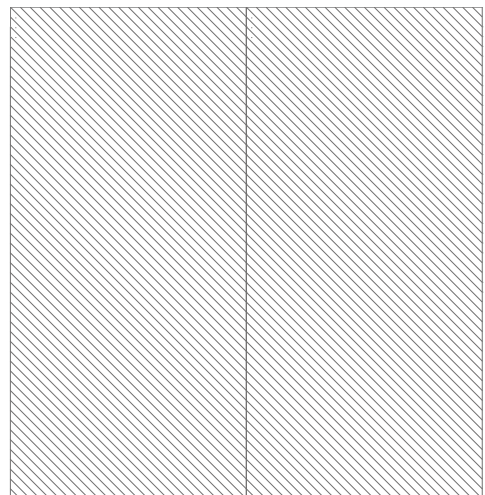
A04



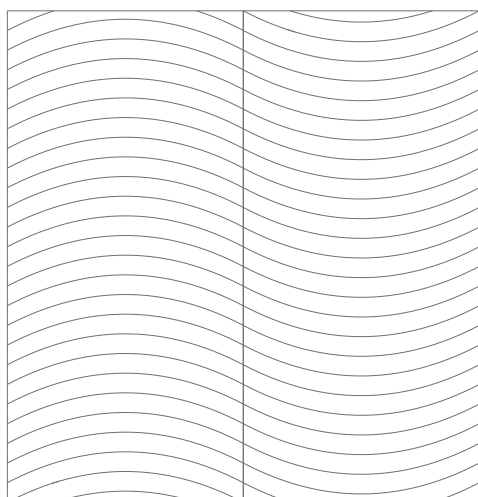
A05



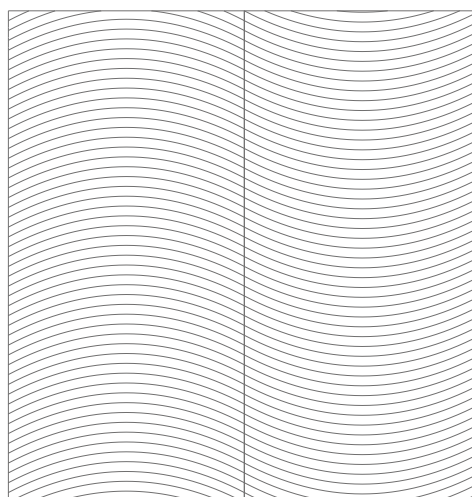
A06



A07



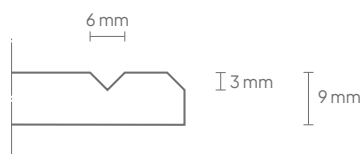
A08



## Technical

<b>Article number:</b>	11210.999SL *
<b>Properties:</b>	Acoustic
<b>Material:</b>	100 % recycable PET-vilt (of which more than 50% is recycled)
<b>Material thickness:</b>	9 mm
<b>Dimensions:</b>	Fully custom in width and height. Composed of panels 120 cm wide, with filler pieces on the left and right sides
<b>Weight (panel of 120x220 cm)</b>	Gross weight: 5.82 kg Net weight: 4.5 kg
<b>Acoustic values:</b>	Directly to the wall: $\alpha_w$ 0,25 / SAA 0,30 50 mm air gap: $\alpha_w$ 0,55 / SAA 0,70 100 mm air gap: $\alpha_w$ 0,75 / SAA 0,76
<b>Fire resistance:</b>	Tested according to EN13501: B-s1, d0
<b>Installation:</b>	Kit. For walls with a smooth texture: 51505.014. For walls with a rough texture: 51505.007.
<b>Warranty:</b>	2 years
<b>V-cut pattern:</b>	3 mm deep, $\pm$ 6 mm wide
<b>Edge finishing:</b>	Bevel-cut edge, 3 mm

\* Include the colour code of the PET felt first in the article number, optionally followed by the cut-out code, in your request for a quote or order: [article number + colour code + cut-out code].



## Packaging

<b>Type:</b>	Shrink wrap
<b>Content:</b>	Chameleon Sharp Acoustics panel and assembly manual
<b>Packaging unit:</b>	1 unit
<b>Materials:</b>	Shrink wrap, corrugated cardboard, EPS bumper
<b>Dimensions:</b>	Panel dimensions + 3 cm width, 3 cm depth, 4 cm height