



# Chameleon Curve Wall Combi

Whiteboards and acoustic solutions for offices

# Content

Why choose Chameleon Curve Wall Combi?	Page 3
Effortless installation	Page 4
Why Chameleon?	Page 5
Chameleon available in pCon	Page 6
Specifications	Page 7
Experience Curve Wall Combi in your project	Page 11



Curve Wall Combi

# Why choose Chameleon Curve Wall Combi?

Each Curve Wall Combi panel is crafted with precision and expertise in the Netherlands. This innovative wall panel combines two functions in one design: a magnetic ceramic steel writing surface and high quality PET felt for acoustic absorption.

- ✓ **Two functions, one design**  
Write, plan and present on ceramic steel while the PET felt absorbs surrounding sound. Ideal for meeting rooms, project spaces and hybrid workplaces.
- ✓ **Visual calm and acoustic comfort**  
Where traditional whiteboards can appear harsh in an interior, Curve Wall Combi creates balance. The combination of a soft textile texture and a clean writing surface brings calm both visually and acoustically.
- ✓ **Colour and appearance**  
Combine glossy white High Gloss, the classic Chalk chalkboard surface or the soft matte tones of SatinTones with PET felt in various colours. This allows Curve Wall Combi to align perfectly with the materials and atmosphere of the interior concept.

## Expertly crafted in the Netherlands

Each Curve Wall Combi whiteboard is crafted with precision and expertise in the Netherlands. Curve Wall Combi panels consist of three carefully selected layers: a writing surface, a core and a backing plate.

After production, each surface is visually inspected and finished by hand. The clean lacquered edges and the frameless design create a refined appearance that

fits perfectly within high end office environments. By combining modern technology with craftsmanship, a whiteboard is created that is not only functional but also contributes to calm and visual quality within the space.

# Effortless installation

Our mounting system consists of two components that together create a revolution in installation:



Magnetic installation system

## 1. Magnetic plates on the wall

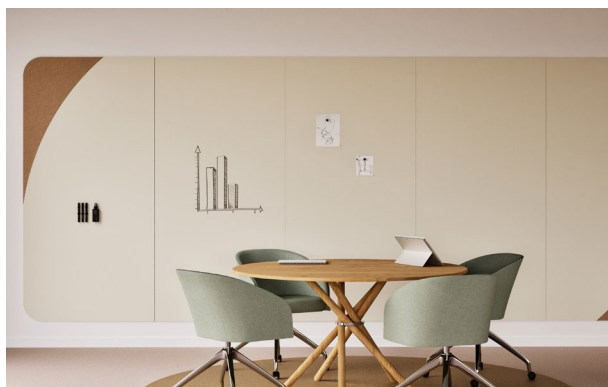
These steel plates, equipped with a powerful magnetic sheet, are securely fixed to the wall with four screws per plate. The required number of plates depends on the size of the whiteboard to ensure safe and stable mounting. The plates form the foundation yet remain invisible after installation. This combination of simplicity and certainty has also been independently tested: the system is TÜV certified, ensuring reliability, safety and long lasting performance.

## 2. Whiteboards with a magnet receptive backing sheet

The rear side of every Chameleon whiteboard features a thin steel layer. This allows the panel to attach directly to the magnetic plates the moment you place it against the wall. No sliding, no tilting and no visible mounting points. The result is a clean and solid finish. The whiteboard appears to float against the wall. No screw heads. No rails. Only design and function in perfect balance.

## Install the way you want, fast and stylish

Curve Wall Combi is easy to install thanks to the clever, TÜV certified magnetic mounting system, regardless of the chosen whiteboard size. The system enables quick and precise installation, ensuring the board always aligns perfectly with the design and use of the space. For additional installation convenience, use glass lifters (51508.010).



Curve Wall Combi - 5 metres wide



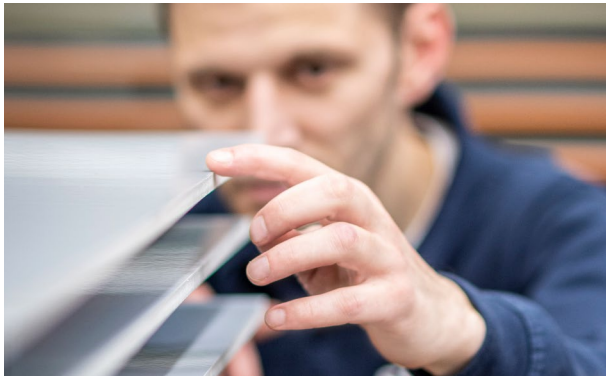
Curve Wall Combi - 3 metres wide

# Why Chameleon?

You don't choose a Chameleon product just for its high-quality design and proven reliability. You also choose a partner who thinks along with you, responds quickly, and works together to build sustainable solutions. What makes Chameleon unique?

## Flexibility is in our DNA

Whether it concerns customisation, a quick adjustment in scheduling, or specific project requirements, we respond swiftly. Our family business is set up to be customer-focused and agile, without compromising on quality or service.



## Local production, visible craftsmanship

All Chameleon products are manufactured in-house, in our modern production facilities in Geldrop, near Eindhoven. Here, we combine craftsmanship with technology, with care for people and the environment. We warmly invite customers and partners to see firsthand how we ensure quality, sustainability, and transparency.

## Built for the future

Our products are made to last. That's why we offer a lifetime warranty on the ceramic steel writing surface. A long lifespan means less waste, fewer replacements, and therefore a smaller ecological footprint.

## Sustainability

As a brand of Smit Visual, we take our responsibility for people and the planet seriously. We continuously work on making our processes, materials, and products more sustainable. For example, we use FSC-certified wood and hold ISO 14001 and Ecovadis Gold certifications. Sustainability is not a project, but an attitude embedded in our daily work.



# Chameleon available in pCon

The Chameleon product portfolio is an addition to any interior project where collaboration and creativity for end users are key objectives. The whiteboards and acoustic wall panels are available in pCon.planner, pCon.box, pCon Catalog, and pCon.facts.

Already using pCon? Then request our data directly via [pCon.login](#).

[Chameleon data request](#)

## I am not using pCon yet

The globally renowned pCon platform is a 3D interior design software used by countless interior professionals. pCon offers various apps you can use. The main tool you need to create 3D visualisations is pCon.planner for laptop/desktop. This software is free to use and can be downloaded here. Don't forget to request the Chameleon data at the top of this page afterwards.

[Download pCon planner](#)

## Additional pCon tools

Chameleon assortment items are freely accessible and can be downloaded as 3D files in pCon.catalog.

Configure Chameleon products and place them directly in a space using augmented reality. You can also upload 2D floor plans for precise placement.



### pCon.facts

Always have access to product information, 3D models, and images of Chameleon products. Ideal for presentations.

The ultimate quotation tool with the CPQ (Configure, Price, Quote) application. Configure products and determine prices.

# Specifications

## What is Ceramic steel?

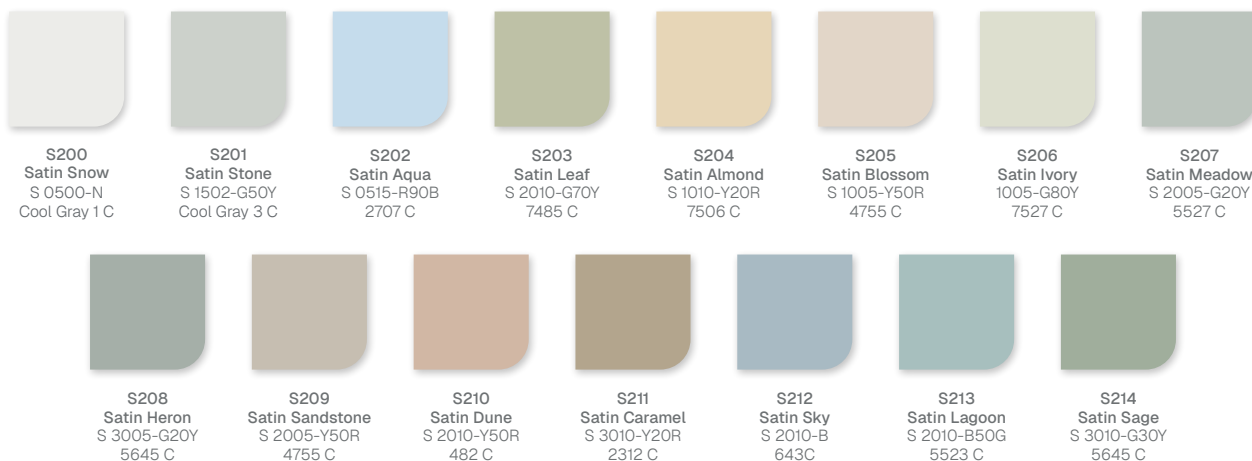
All Chameleon surfaces on this page feature a top layer of ceramic steel which is Cradle to Cradle Bronze certified. This enamel layer offers a hardness and smoothness comparable to glass. It provides the same scratch resistance and the same long lifespan. Chameleon offers the following ceramic steel surfaces:



## SatinTones

SatinTones is a ceramic steel surface with a matt appearance. The surface brings calm to the space and remains perfectly legible from every viewing angle. It is also available in fifteen subtle colour tones. SatinTones is an excellent alternative to glassboards.

- ① **Application:** Whiteboard with a low gloss surface. S200 is also suitable for projection
- ① **Writing / erasing:** Whiteboard markers / dry erase
- ① **Panel edge colour:** Same colour as the surface
- ① **Maximum panel size:** 1180x2980 mm / 1480x2980 mm (S200 only)



## High Gloss

This surface has a high gloss level although lower than glassboards. The benefit of the glossy finish is that markings are perfectly visible. This makes it ideal for presentations and situations where content is read from a distance, such as in offices.

- ① **Application:** Best selling whiteboard surface with a high gloss level
- ① **Writing / erasing:** Whiteboard markers / dry erase
- ① **Panel edge colour:** White
- ① **Maximum panel size:** 1180x2980 mm / 1480x2980 mm



HG100  
High Gloss  
S 0500-N  
Cool Gray 1 C

## Projection

This ultra matt surface shows no reflection whatsoever. Projection on this board therefore delivers the best possible image quality from projectors. The board is writable but erasing is considerably less easy. When cleaned with whiteboard spray it can be restored to a perfectly clean state.

- ① **Application:** Ultra matt surface, highly suitable for projection
- ① **Writing / erasing:** Whiteboard markers / wet erase
- ① **Panel edge colour:** White
- ① **Maximum panel size:** 1180x2980 mm / 1480x2980 mm



Projection  
S 0500-N  
Cool Gray 1 C

## Chalk

Choosing a chalkboard comes with specific benefits. The most important is the ability to create nuances in writing by applying more or less pressure. The Chameleon chalkboard surface is manufactured with ceramic steel just like the whiteboard surfaces. As a result Chameleon chalkboards are perfectly erasable throughout their entire lifespan. The matt surfaces are available in green and grey.

- ① **Application:** Colourfast, wear resistant with an even colour tone
- ① **Writing / erasing:** Chalk / dry erase
- ① **Panel edge colour:** Black
- ① **Maximum panel size:** 1180x2980 mm / 1480x2980 mm (C301 only)



C300  
Chalk Graphite  
S 7000-N  
Black 7C



C301  
Chalk Canopy  
S 6020-G  
560 C



Close-up

# Specifications

## Colours

The PET felt material used in Chameleon acoustic products is made from recycled PET bottles, largely sourced from post consumer waste. This sustainable material not only offers excellent acoustic performance but also provides a modern and stylish appearance. PET felt is shape stable, hard wearing and low maintenance, and contributes to a pleasant and quiet working environment. The material can easily be cleaned with a lightly damp cloth. Chameleon PET felt is available in no fewer than 23 contemporary colours, making it easy to match with any interior style.

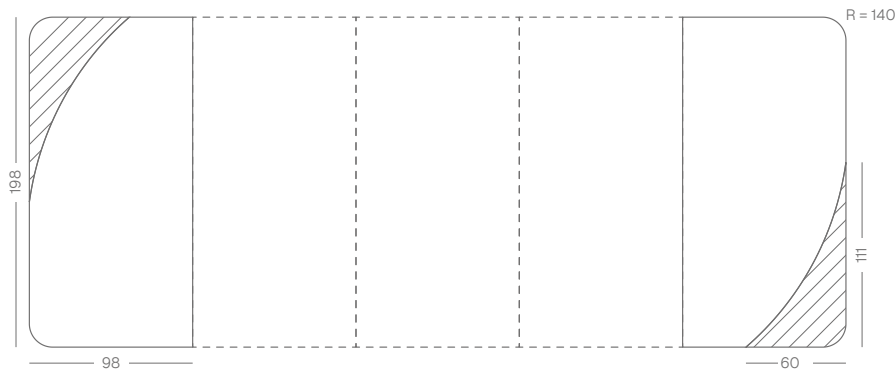


# General



Size (cm)	Size whiteboard (cm)	Size PET-felt (cm)	Item number	Panels	Gross weight	Net weight
198 x 196	198 x 98	111 x 60	16006.050 * (+ code)	2	40 kg	39 kg
198 x 294	198 x 98	111 x 60	16006.051 * (+ code)	3	22 kg	15,8 kg
198 x 392	198 x 98	111 x 60	16006.052 * (+ code)	4	12,84 kg	10,7 kg
198 x 490	198 x 98	111 x 60	16006.053 * (+ code)	5	25,92 kg	21,6 kg

\* When submitting a request for quotation or placing an order, please include the PET felt colour code with the item number: [item number + PET felt colour code].



# Technical

Whiteboard panel

Properties:	- Magnetic and dry-erase - Suitable for very intensive use
Thickness:	10 mm
Mounting:	TÜV-certified magnetic mounting system
Warranty:	2 years
Surface warranty:	Lifetime on writeability and dry erasure



# Technical

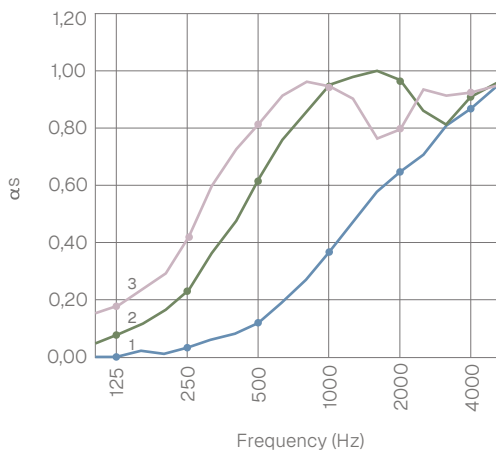
PET-felt

Properties:	Acoustic
Material:	100% recyclable PET felt (of which 50% recycled)
Thickness:	± 14,5 mm (including mounting system)
Material thickness:	9 mm (10 mm incl. backing)
Acoustic values:	$\alpha_w$ 0,25 / SAA 0,30
Fire resistance:	Tested according to EN13501: B-s1, d0
Installation:	Remountable magnetic mounting
Warranty:	2 years

## Acoustic values

PET-felt

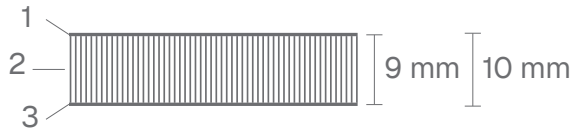
		125	250	500	1k	2k	4k
1 Without cavity $\alpha_w$ 0,25 / SAA 0,30		0,00	0,01	0,08	0,27	0,58	0,81
	1,3 oct.	0,00	0,03	0,12	0,37	0,65	0,87
	1/1 oct.	0,01	0,03	0,13	0,37	0,65	0,87
2 50 mm cavity $\alpha_w$ 0,55 / SAA 0,70		0,05	0,17	0,48	0,87	1,01	0,82
	1,3 oct.	0,08	0,24	0,63	0,96	0,98	0,92
	1/1 oct.	0,12	0,37	0,77	0,99	0,87	0,96
3 100 mm cavity $\alpha_w$ 0,75 / SAA 0,76		0,15	0,29	0,73	0,97	0,77	0,92
	1,3 oct.	0,18	0,42	0,82	0,95	0,80	0,93
	1/1 oct.	0,23	0,60	0,92	0,91	0,94	0,95



# Construction

Whiteboard panel

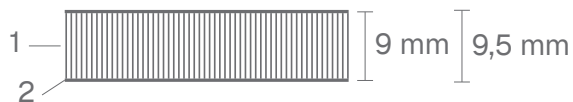
1. Surface:	Ceramic steel 0.4 mm (Indoor Air Quality Certified to SCS-EC10.3-2014 v4.0)
2. Carrier:	MDF 9 mm (FSC 70%)
3. Backing:	0.4 mm galvanized steel sheet
4. Finish:	Painted edges, see page 7



# Construction

PET-felt

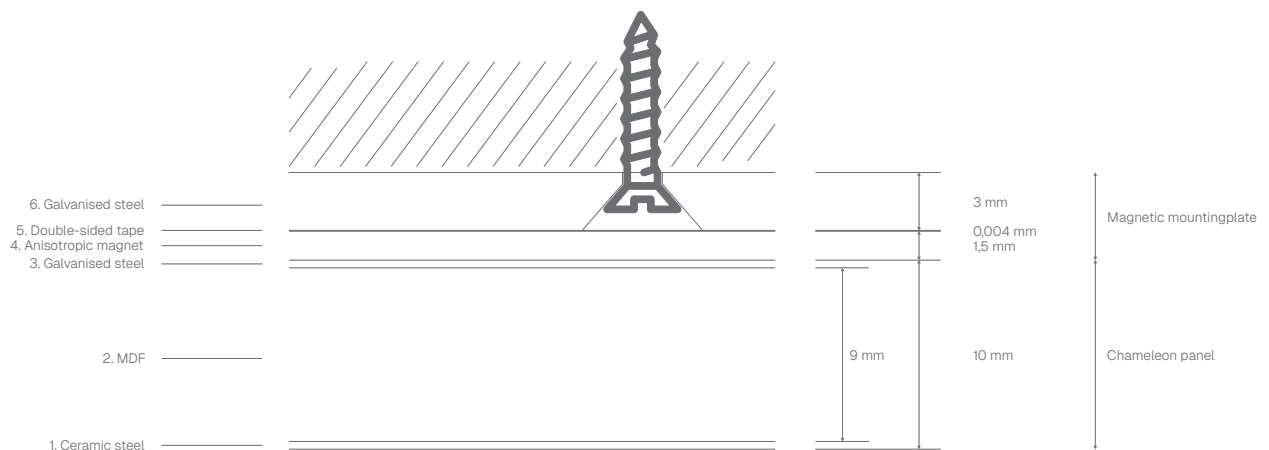
1. Surface:	PET felt 9 mm
2. Backing:	0.4 mm galvanised steel sheet



# Construction

Magnetic mounting plate

5. Magnetic sheet:	Anisotropic magnet, 1,5 mm thick
6. Adhesive layer:	Double-sided tape
7. Mounting plate:	Gegalvanised-steel plate, 3 mm thick, with holes for screwing



# Packaging

	Whiteboard	PET-felt
<b>Type:</b>	Crate	Shrink wrap
<b>Content:</b>	Chameleon whiteboard panel, mounting plates, screws, wall plugs and installation instructions	Chameleon Acoustics panel, mounting plates or mounting strips, screws, wall plugs and installation instructions
<b>Packaging unit:</b>	1 unit	1 unit
<b>Materials:</b>	Wood, corrugated cardboard, polyethylene protective film	Single items: shrink wrap, corrugated cardboard, EPS corner protection. Large orders: bulk on pallet
<b>Size:</b>	Board dimensions + 3 cm width, 3 cm depth, 4 cm height	Size panel+ 4 cm all around. Total thickness: approx. 3 cm.

# Experience Curve Wall Combi in your project

Curious to see how Chameleon Curve Wall Combi fits into your interior design?  
We're happy to support you, from samples to custom solutions, from pCon files to showroom visits.

## What you can do:

[Request a colour or material sample](#)[Download pCon-data for project visualisations](#)[Schedule a consultation with a product specialist](#)[Visit our showroom by appointment](#)

## Smit Visual B.V.

Spaarpot 120-122  
5667 KZ Geldrop  
The Netherlands

+31(0)40 - 280 85 00  
info@smit-visual.nl  
chameleonwriting.com