

Chameleon Wall Coverings Combi

Specifications



Chameleon quality

The core of the Chameleon range is formed by the whiteboard. A Chameleon whiteboard can be recognized for its quality, which is visible in four ways:

1. Durability: Chameleon whiteboards are 10 mm thick with a robust, water-repellent MDF core (FSC-certified, see sustainability).
2. Surface: Chameleon whiteboards feature high-quality magnetic ceramic steel, recognizable by a smooth surface without imperfections. We offer a lifetime warranty on writing and erasing on all ceramic steel surfaces. Below is an overview of our ceramic steel surface options.
3. Finish: Chameleon whiteboards are machine-cut and then hand-finished. We pay great attention to the finishing process.
4. Installation: Chameleon uses a unique TÜV-certified mounting system that works with magnetic plates.



Chameleon surfaces

What is Ceramic steel?

All Chameleon surfaces on this page feature a top layer of ceramic steel. This is an enamel layer that is comparable to glass in terms of hardness and smoothness. Thus, it is equally scratch-resistant and has the same long lifespan. Chameleon offers the following ceramic steel surfaces:

High Gloss

This is the best-selling whiteboard surface. The surface has a high gloss level, though not as high as glass whiteboards. The advantage of the glossy surface is that markings are perfectly visible on it. This makes it ideal for presentations and situations where reading from a distance is necessary, such as in schools.

SatinTones


SatinTones is a ceramic steel surface with a matte appearance. The surface radiates calmness and is perfectly readable from all angles. Moreover, this surface is available in six subtle colour shades. SatinTones is a good alternative to glass whiteboards.

Chalk

Choosing a chalkboard has specific reasons. The main reason is that nuances can be applied with chalk by pressing harder or softer. The Chameleon chalkboard surface is, like the whiteboard surfaces, made with ceramic steel. As a result, Chameleon chalkboards are also perfectly erasable for life. The matte surfaces are available in green and grey.

Projection

This extremely matte surface shows no reflections at all. Projecting onto this board provides the best possible image quality from projectors. The board is writable, but erasing is significantly more challenging. However, using whiteboard spray when erasing will clean the board effectively.

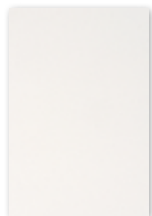
Type	Surface + code	Colour	Description	Writing / erasing	Panel edge colour	Maximum dimension
High Gloss	High Gloss HG100		Most popular whiteboard surface with a high gloss finish	Whiteboard markers / dry erase	White lacquered Curve Wall in black	1480x2980 mm
	Satin Snow S200		White whiteboard with a somewhat matte surface, also suitable for projection	Whiteboard markers / dry erase	White lacquered	1180x2980 mm
Satin Tones	Satin Stone S201		Grey whiteboard with a somewhat matte surface	Whiteboard markers / dry erase	Grey lacquered	1180x2980 mm
	Satin Aqua S202		Blue whiteboard with a somewhat matte surface	Whiteboard markers / dry erase	Blue lacquered	1180x2980 mm
	Satin Leaf S203		Green whiteboard with a somewhat matte surface	Whiteboard markers / dry erase	Green lacquered	1180x2980 mm
	Satin Almond S204		Beige whiteboard with a somewhat matte surface	Whiteboard markers / dry erase	Beige lacquered	1180x2980 mm
	Satin Blossom S205		Pink whiteboard with a somewhat matte surface	Whiteboard markers / dry erase	Pink lacquered	1180x2980 mm
Chalk	Chalk Graphite C300		Colourfast, durable surface with a soft and even colour distribution	Chalk / dry erase	Black lacquered	1180x2980 mm
	Chalk Canopy C301		Colourfast, durable surface with a soft and even colour distribution	Chalk / dry erase	Black lacquered	1480x2980 mm
Projection *	Projection		Very matte surface, suitable for projection	Whiteboard markers / wet erase	White lacquered	1480x2980 mm

* Not included on product-level. On request.

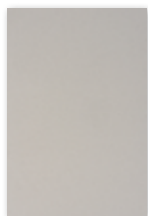


Chameleon Acoustics – colours

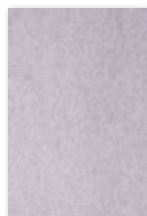
The 9 mm PET felt of Chameleon Acoustics is dyed throughout. We have selected 21 colours, with a strong representation of gray and brown tones.



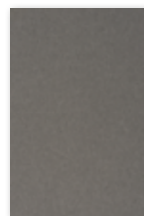
White
P001



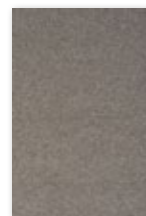
Dusty white
P002



White marble
P003



Calm grey
P004



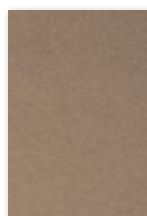
Rough grey
P005



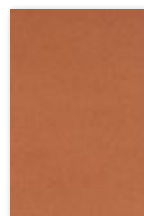
Black lava
P006



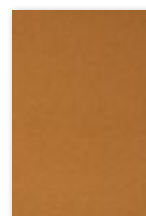
Flat white
P007



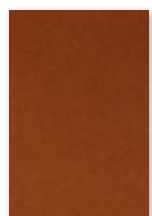
Hare
P008



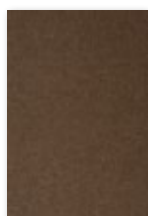
Canyon
P009



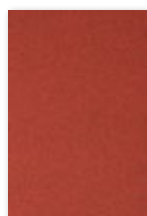
Turmeric
P010



Rust
P011



Tree bark
P012



Magma
P013



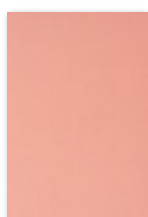
Polar ice
P014



Light blue
quartz
P015



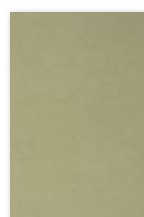
Dusk
P016



Pink rose
P017



Garnet
P018



Iguana
P019



Ocean green
P020



Anthracite
P021

General

								
HG100 High Gloss	S200 Satin Snow	S201 Satin Stone	S202 Satin Aqua	S203 Satin Leaf	S204 Satin Almond	S205 Satin Blossom	C300 Chalk Graphite	C301 Chalk Canopy

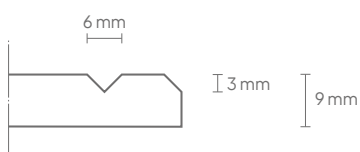
Size (cm)	Art. no.	Description	Pattern code (optional)	Panels	Gross weight	Nett weight
PET felt						
Custom	11210.999SL *	9 mm Single Layer	A01t/mA08	Custom	N.t.b.	N.t.b.
Whiteboard						
198 x 196	16006.040 (+ code)	Curve Wall	N.a.	2	100 kg	78 kg
198 x 294	16006.041 (+ code)	Curve Wall	N.a.	3	150 kg	117 kg
198 x 392	16006.042 (+ code)	Curve Wall	N.a.	4	180 kg	156 kg
198 x 490	16006.043 (+ code)	Curve Wall	N.a.	5	220 kg	195 kg
Custom	16006.999 (+ code)	Sharp Wall	N.a.	Custom	N.a.	N.a.

* Include the colour code of the PET felt, optionally followed by the cutout code, with the article number in your request for a quotation or order: [article number + colour code + cutout code].

Technical

PET felt

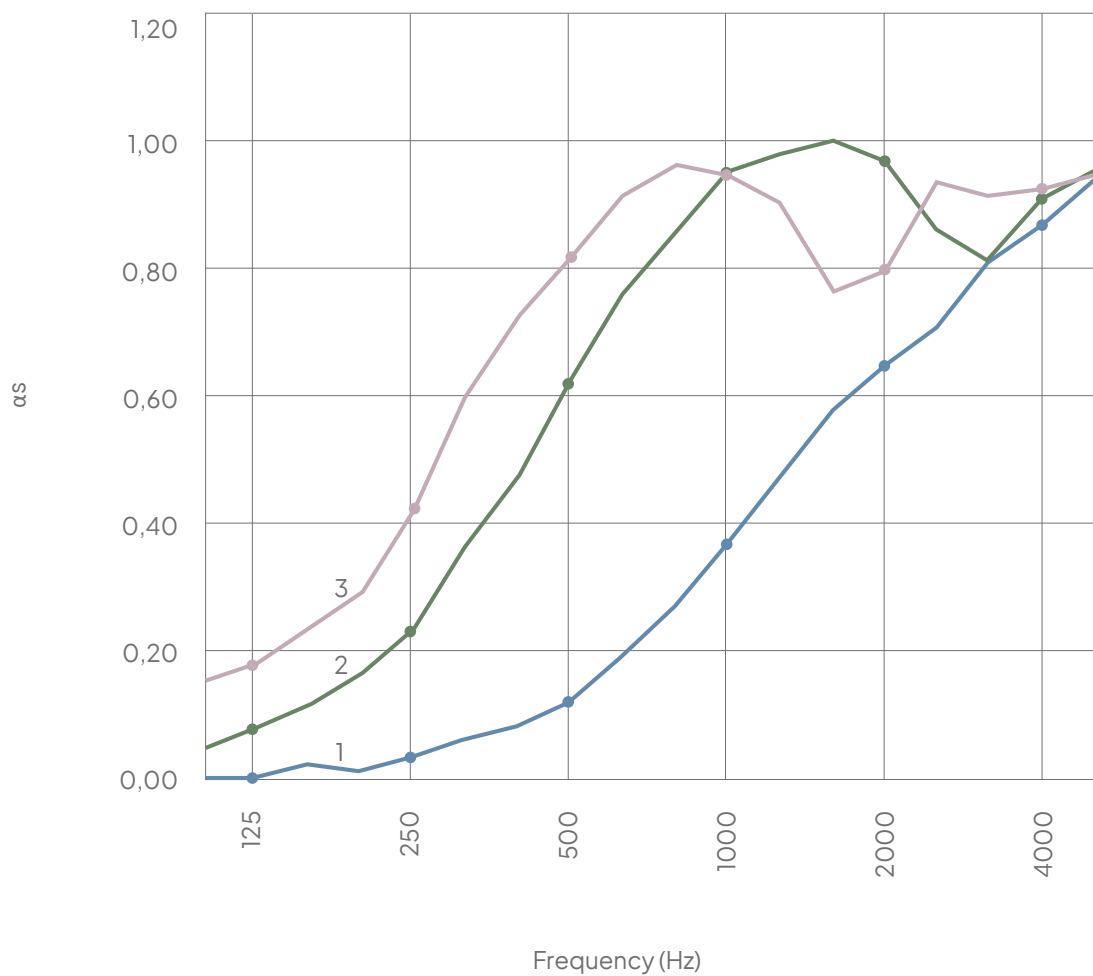
Properties:	Acoustic
Material:	100 % recycable PET-vilt (of which 60% is recycled)
Material thickness:	9 mm
Size:	Fully customized, constructed from panels measuring 220 x 120 cm and filler pieces.
Weight (panel of 120x220 cm)	Gross: 5,82 kg Nett: 4,5 kg
Acoustic properties:	Directly to the wall: α_w 0,25 / SAA 0,30 50 mm air gap: α_w 0,55 / SAA 0,70 100 mm air gap: α_w 0,75 / SAA 0,76
Fire resistance:	According to EN13501: B-s1, d0
Mounting:	Kit. For walls with a smooth texture: 51505.014. For walls with a rough texture: 51505.007.
Warranty:	2 years
V-cut pattern:	3 mm deep, \pm 6 mm wide
Edge finishing:	Bevel-cut edge, 3 mm



Technical

PET felt

		125	250	500	1k	2k	4k
1	9 mm - without air gap	0,00	0,01	0,08	0,27	0,58	0,81
	α_w 0,25 / SAA 0,30	1,3 oct.	0,00	0,03	0,12	0,37	0,65
			0,02	0,06	0,19	0,47	0,71
	1/1 oct.	0,01	0,03	0,13	0,37	0,65	0,87
		125	250	500	1k	2k	4k
2	9 mm - 50 mm air gap	0,05	0,17	0,48	0,87	1,01	0,82
	α_w 0,55 / SAA 0,70	1,3 oct.	0,08	0,24	0,63	0,96	0,98
			0,12	0,37	0,77	0,99	0,96
	1/1 oct.	0,08	0,26	0,63	0,94	0,95	0,90
		125	250	500	1k	2k	4k
3	9 mm - 100 mm air gap	0,15	0,29	0,73	0,97	0,77	0,92
	α_w 0,75 / SAA 0,76	1,3 oct.	0,18	0,42	0,82	0,95	0,80
			0,23	0,60	0,92	0,91	0,94
	1/1 oct.	0,19	0,44	0,82	0,94	0,84	0,93



Technical

Whiteboard

Properties:

- Magnetic and dry-erase
- Suitable for very intensive use

Thickness:	10 mm
Mounting:	TÜV-certified magnetic mounting system
Warranty:	2 years
Surface warranty:	Lifetime on writeability and dry erasure



Configuration

PET felt - 9 mm Single Layer

Product: PET felt: 9 mm Single Layer

Thickness: 9 mm

Size:

- Wall-filling, composed of panels measuring 220 x 120 cm, with filler pieces at the top and right.
- Cutout up to 20 cm within the contours of the whiteboard wall.

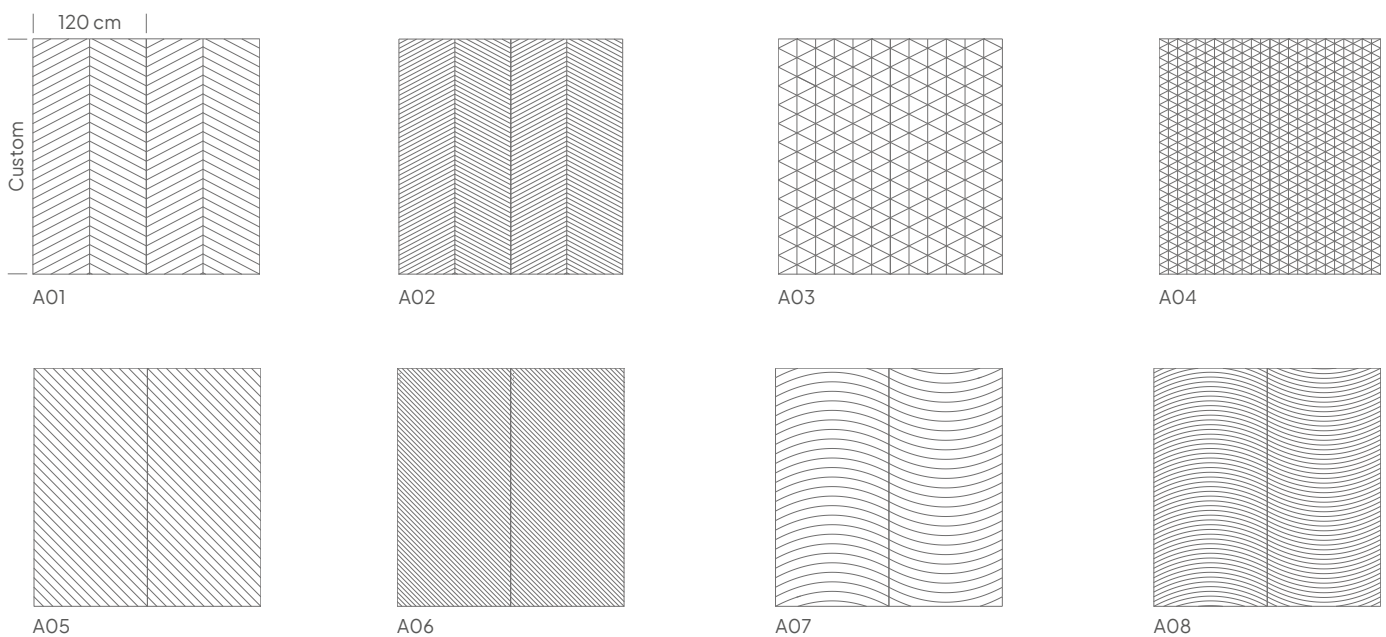
Colour: 21 colour options, see page 4

Patterns: A01 to A08

Mounting: With kit, directly to the wall, see page 11.

Patterns

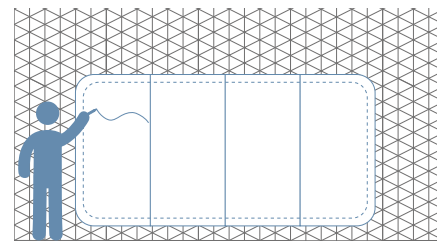
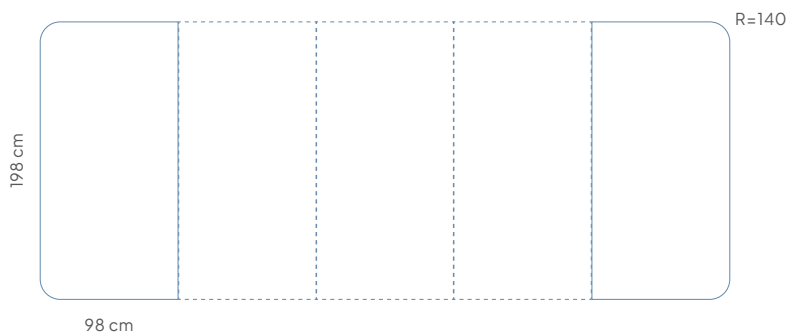
By default, the panel is produced without a pattern. Optionally, you can choose from eight V-groove patterns, which are cut into the PET felt to enhance the aesthetic appeal of the panel.



Configuration

Whiteboard - Curve Wall

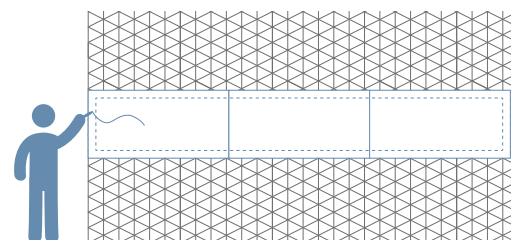
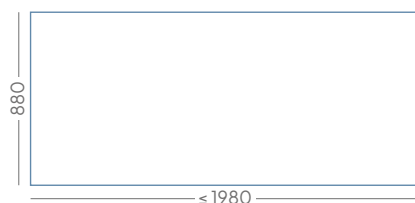
Product:	Whiteboard wall: Curve Wall
Thickness:	10 mm
Size:	198 x 196 cm (2 panels) 198 x 294 cm (3 panels) 198 x 392 cm (4 panels) 198 x 490 cm (5 panels)
Colours/surfaces:	6 options, see page 3
Mounting	<ul style="list-style-type: none"> • Magnetic mounting with overlay • The whiteboard wall is mounted with a 10 mm overlay over the PET felt, secured onto the magnetic plates, which are padded at the back • The bottom of the Curve Wall is positioned 20 cm above the bottom edge of the PET felt



Configuration

Whiteboard - Sharp Wall - Landscape 88 cm

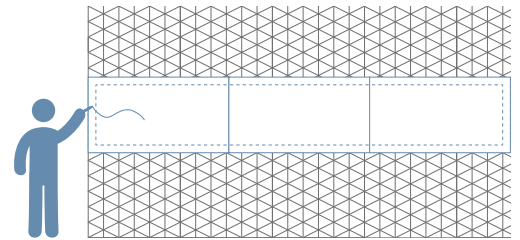
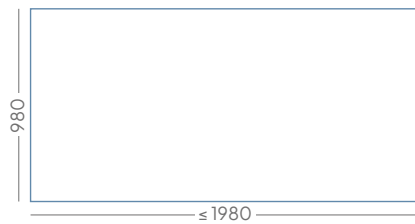
Product:	Whiteboard Wall: Sharp Wall - Landscape
Thickness:	10 mm
Constellation and size:	88 cm high panels (landscape): panels are evenly distributed across the width of the wall, with a maximum width of 198 cm per panel
Colours/surfaces:	6 opties, zie p. 3
Mounting	<ul style="list-style-type: none"> • Magnetic mounting with overlay • The whiteboard wall is mounted with a 10 mm overlay over the PET felt, secured onto the magnetic plates, which are padded at the back • The bottom of the Sharp Wall is positioned 120 cm above the bottom edge of the PET felt



Configuration

Whiteboard - Sharp Wall - Landscape 98 cm

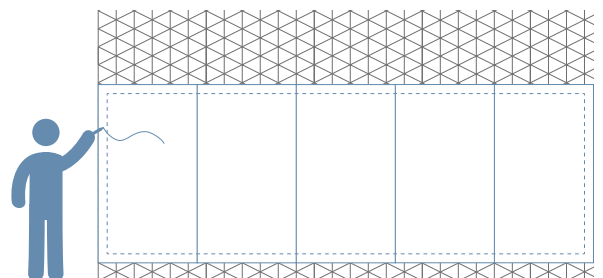
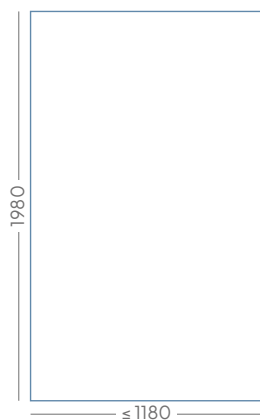
Product:	Whiteboard wand: Sharp Wall - Landscape
Thickness:	10 mm
Constellation and size:	98 cm high panels (landscape): panels are evenly distributed across the width of the wall, with a maximum width of 198 cm per panel
Colours/surfaces:	6 options, zie page 3
Mounting	<ul style="list-style-type: none"> • Magnetic mounting with overlay • The whiteboard wall is mounted with a 10 mm overlay over the PET felt, secured onto the magnetic plates, which are padded at the back • The bottom of the Sharp Wall is positioned 110 cm above the bottom edge of the PET felt



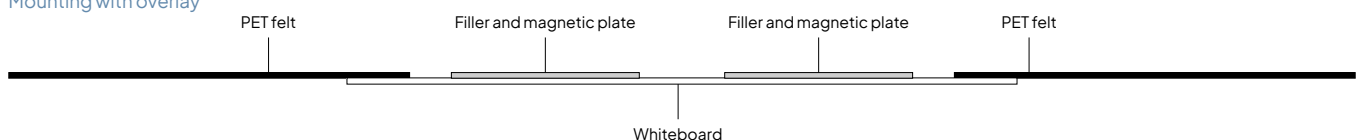
Configuratie

Whiteboard - Sharp Wall - Portrait

Product:	Whiteboard wand: Sharp Wall - Portrait
Thickness:	10 mm
Constellation and size:	198 cm high panels (portrait): panels are evenly distributed across the width of the wall, with a maximum width of 118 cm per panel
Colours/surfaces:	6 options, zie page 3
Mounting	<ul style="list-style-type: none"> • Magnetic mounting with overlay • The whiteboard wall is mounted with a 10 mm overlay over the PET felt, secured onto the magnetic plates, which are padded at the back • The bottom of the Sharp Wall is positioned 20 cm above the bottom edge of the PET felt



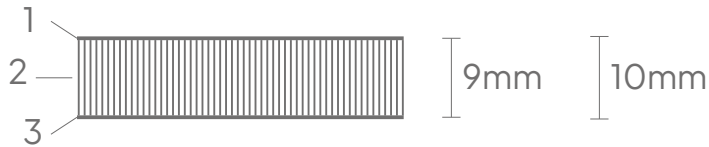
Mounting with overlay



Construction

Whiteboard panel

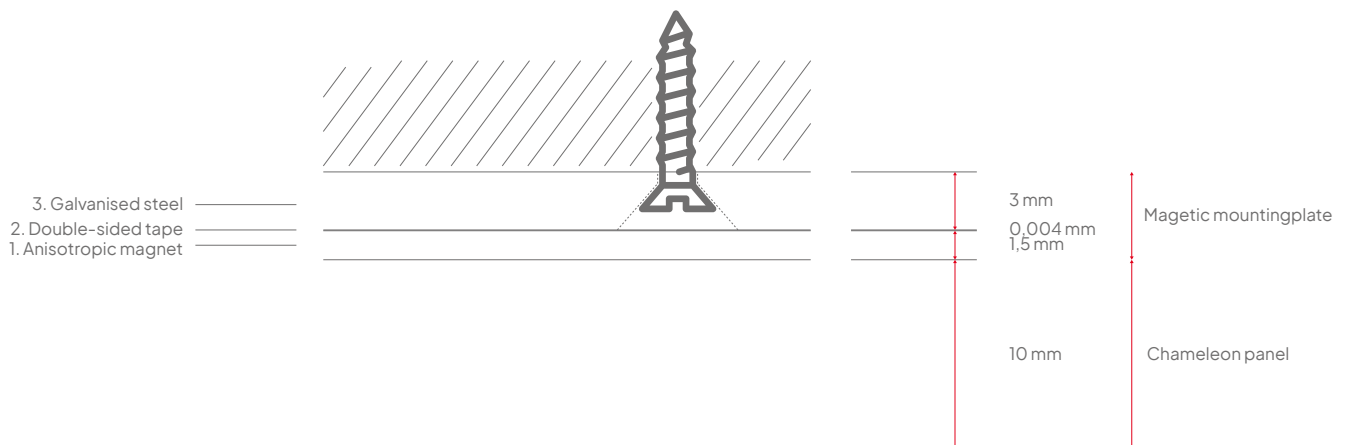
1. Surface:	Ceramic steel 0.4 mm (Indoor Air Quality Certified to SCS-EC10.3-2014 v4.0)
2. Carrier:	MDF 9 mm (FSC 70%)
3. Backing:	0.4 mm galvanized steel sheet
Finish:	Painted edges, see page 3



Construction

Magnetic mounting plate

1. Magnetic sheet:	Anisotropic magnet, 1,5 mm thick
2. Adhesive layer:	Double-sided tape
3. Mounting plate:	Gegalvanised-steel plate, 3 mm thick, with holes for screwing



Packaging

Whiteboard

Type:	Crate
Content:	Chameleon whiteboard panel, mounting plate, screws, dowels and mounting instructions
Packaging unit:	1 unit
Materials:	Wood, cardboard, polyethylene protection tube
Size:	Size board + 3 cm width, 3 cm depth, 4 cm height

Packaging

PET felt

Type:	Shrink wrap
Contents:	Chameleon Acoustics panel and assembly manual
Packaging unit:	1 unit
Materials:	Shrink wrap, corrugated cardboard, EPS bumper Large orders: bulk on pallet
Dimensions:	Panel dimensions + 3 cm width, 3 cm depth, 4 cm height

Mounting

PET felt

Chameleon 9 mm Single Layer products are mounted with adhesive, which is not included. The initial adhesion is flexible enough to allow slight adjustments for the final positioning of the panels. It can be added to the order. For walls with a smooth texture: 51505.014 (Hercuseal 320 Kit Non Staining Bond White or similar adhesive for smooth surfaces). For walls with a rough texture: 51505.007 (Den Braven High Tack Kit or similar adhesive for rough surfaces).