

Chameleon Sharp Wall Acoustics

Specifications

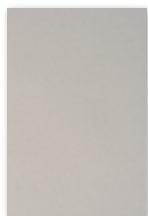


Colours

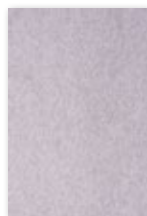
The 9 mm PET felt from Chameleon Sharp Wall Acoustics is dyed-through. We have selected 21 colors, with a strong representation in shades of gray and brown.



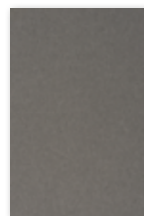
White
P001



Dusty white
P002



White marble
P003



Calm grey
P004



Rough grey
P005



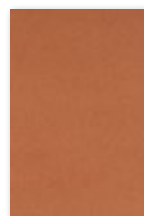
Black lava
P006



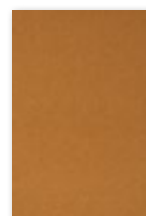
Flat white
P007



Hare
P008



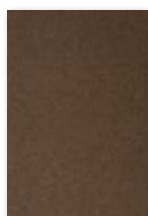
Canyon
P009



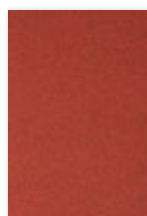
Turmeric
P010



Rust
P011



Tree bark
P012



Magma
P013



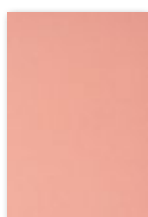
Polar ice
P014



Light blue
quartz
P015



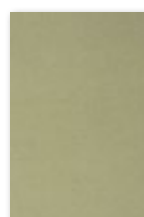
Dusk
P016



Pink rose
P017



Garnet
P018



Iguana
P019



Ocean green
P020

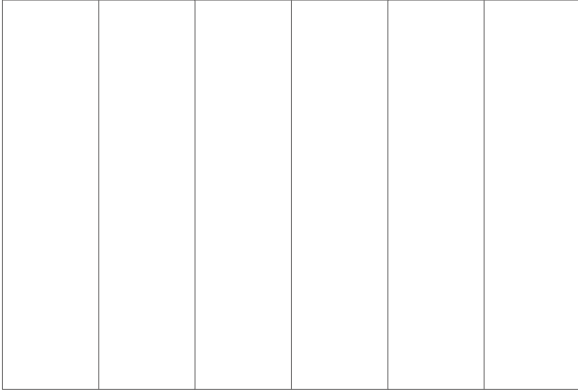


Anthracite
P021

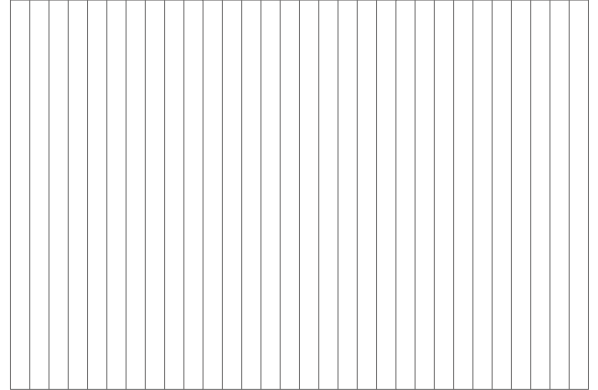
Designs (optional)

As standard, the panel is produced without a pattern. Optionally, you can choose from four V-groove patterns, which are cut into the PET felt to enhance the aesthetic value of the panel.

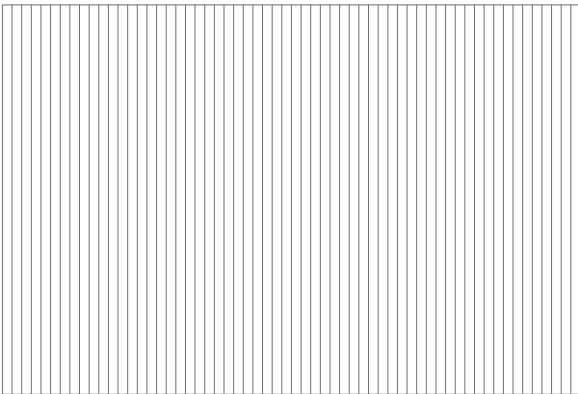
A09



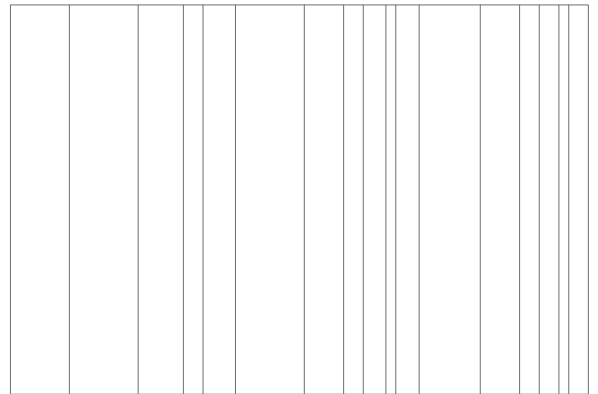
A10



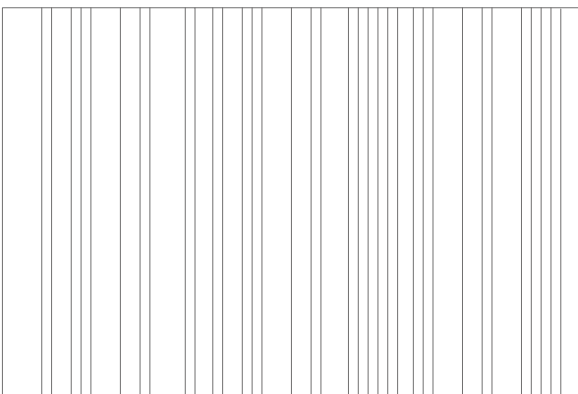
A11



A12



A13



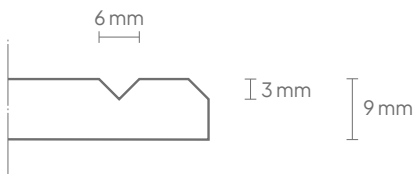
General

Size (cm)	Art. nr.	Cut-out code (optional)	Number of panels	Gross weight	Net weight
198 x 59 cm	11210.201 *	A09, A10, A11, A12, A13	2	11,34 KG	9,00 KG
198 x 118 cm	11210.202 *	A09, A10, A11, A12, A13	3	17,01 KG	13,50 KG
198 x 98 cm	11210.203 *	A09, A10, A11, A12, A13	4	22,68 KG	18,00 KG
198 x 48 cm	11210.204 *	A09, A10, A11, A12, A13	5	28,08 KG	22,50 KG

* When requesting a quote or placing an order, please include the article number followed by the color code of the PET felt, optionally followed by the cut-out code: [article number + color code + cut-out code (optional)].

Technical

Properties:	Acoustic
Material:	100% recyclable PET felt (of which 60% recycled)
Material thickness:	9 mm
Acoustic values:	Directly to the wall: α_w 0,25 / SAA 0,30 50 mm air gap: α_w 0,55 / SAA 0,70 100 mm air gap: α_w 0,75 / SAA 0,76
Fire resistance:	Tested according to EN13501: B-s1, d0
Installation:	Adhesive (not included). For walls with a smooth texture: 51505.014. For walls with a rough texture: 51505.007.
Warranty:	2 years
Optional V-cut pattern:	3 mm deep, \pm 6 mm wide
Edge finishing:	Bevel-cut edge, 3 mm



Packaging

Type:	Schink foil
Contents:	Chameleon Sharp Wall Acoustics panel and assembly manual
Packaging unit:	1 unit per panel
Materials:	Individual pieces: shrink film, corrugated cardboard, EPS bumper Large orders: bulk on pallet
Dimensions per unit:	Panel dimensions + 4 cm all around. Total thickness: approximately 3 cm.