

Chameleon Pebbles Acoustics

Specifications



Colours

The 9 mm PET felt from Chameleon Acoustic Elements - Curve is dyed-through. In creative cut-outs, the color is also visible within the cut-out. We have selected 21 colors, with a strong representation in shades of gray and brown.



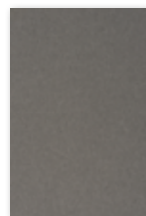
White
P001



Dusty white
P002



White marble
P003



Calm grey
P004



Rough grey
P005



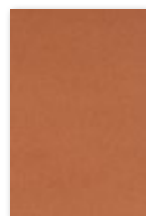
Black lava
P006



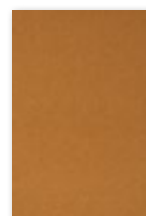
Flat white
P007



Hare
P008



Canyon
P009



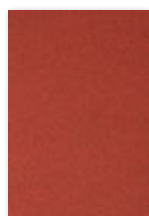
Turmeric
P010



Rust
P011



Tree bark
P012



Magma
P013



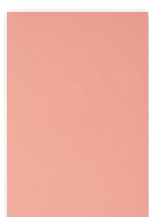
Polar ice
P014



Light blue
quartz
P015



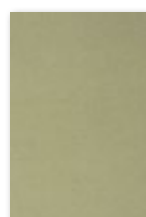
Dusk
P016



Pink rose
P017



Garnet
P018



Iguana
P019



Ocean green
P020

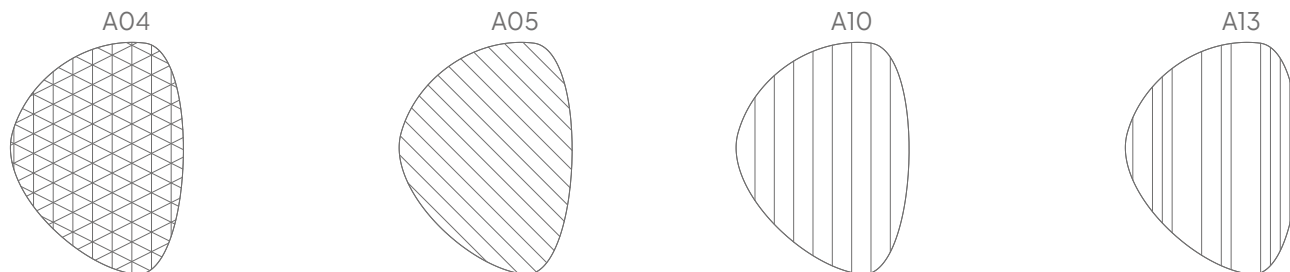


Anthracite
P021

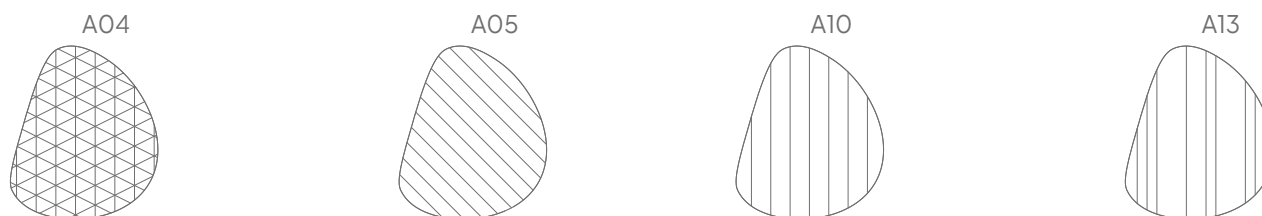
Designs (optional)

As standard, the panel is produced without a pattern. Optionally, you can choose from four V-groove patterns, which are cut into the PET felt to enhance the aesthetic value of the panel.

Ø 118 cm



Ø 98 cm



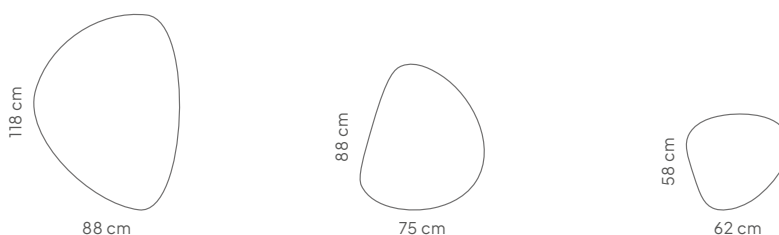
Ø 58 cm



General

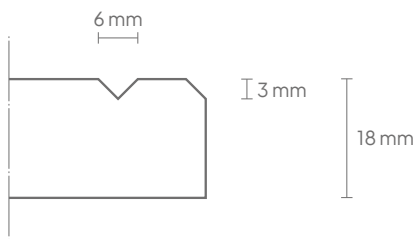
Size (cm)	Art. nr.	Cut-out code (optional)	Gross weight	Net weight
Set	11208.321 *	A04, A05, A10, A13	10,58 KG	9,55 KG
118 x 88 cm	11208.322 *	A04, A05, A10, A13	5,42 KG	4,90 KG
88 x 75 cm	11208.323 *	A04, A05, A10, A13	3,33 KG	3,00 KG
58 x 62 cm	11208.324 *	A04, A05, A10, A13	1,83 KG	1,65 KG

* When requesting a quote or placing an order, please include the article number followed by the color code of the PET felt, optionally followed by the cut-out code: [article number + colour code + cut-out code (optional)].



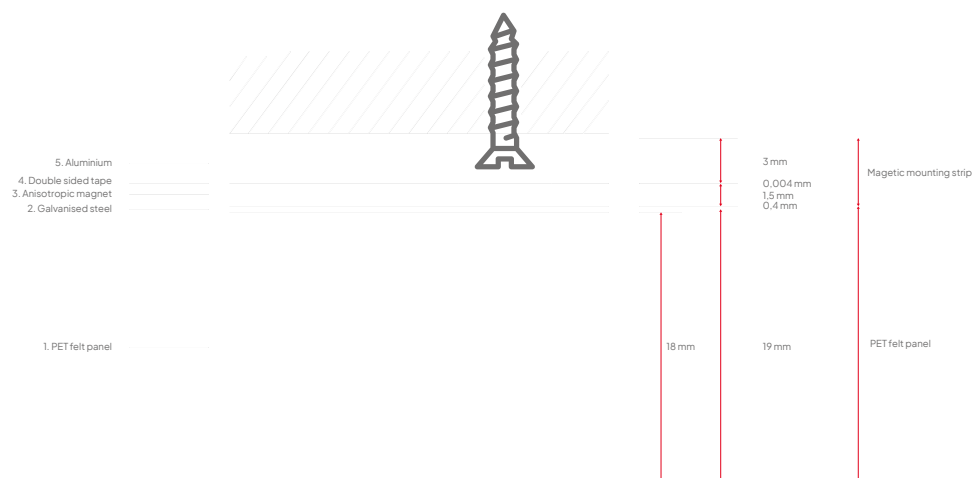
Technical

Properties:	Acoustic
Material:	100% recyclable PET felt (of which 60% recycled)
Thickness:	Approximately 23.5 mm (including mounting hardware)
Material thickness:	18 mm
Acoustic values:	Directly to the wall: α_w 0,45 / SAA 0,59 50 mm air gap: α_w 0,75 / SAA 0,74 100 mm air gap: α_w 0,80 / SAA 0,74
Fire resistance:	Tested according to EN13501: B-s1, d0
Installation:	Removable magnetic installation
Warranty:	2 years
Optional V-cut pattern:	3 mm deep, \pm 6 mm wide
Edge finishing:	Bevel-cut edge, 3 mm



Construction

1. Surface:	PET felt panel, approximately 18 mm thick
2. Backing:	Galvanized steel, 0.4 mm thick
Mounting material	Magnetic strip



Packaging

Type:	Shrink wrap
Contents:	Chameleon Sharp Acoustics panel and assembly manual
Packaging unit:	1 unit
Materials:	Shrink wrap, corrugated cardboard, EPS bumper
Dimensions:	Panel dimensions + 3 cm width, 3 cm depth, 4 cm height