

Chameleon Curve Wall

Specifications



Chameleon quality

The core of the Chameleon range is formed by the whiteboard. A Chameleon whiteboard can be recognized for its quality, which is visible in four ways:

1. Durability: Chameleon whiteboards are 10 mm thick with a robust, water-repellent MDF core (FSC-certified, see sustainability).
2. Surface: Chameleon whiteboards feature high-quality magnetic ceramic steel, recognizable by a smooth surface without imperfections. We offer a lifetime warranty on writing and erasing on all ceramic steel surfaces. Below is an overview of our ceramic steel surface options.
3. Finish: Chameleon whiteboards are machine-cut and then hand-finished. We pay great attention to the finishing process.
4. Installation: Chameleon uses a unique TÜV-certified mounting system that works with magnetic plates.



Chameleon surfaces

What is Ceramic steel?

All Chameleon surfaces on this page feature a top layer of ceramic steel. This is an enamel layer that is comparable to glass in terms of hardness and smoothness. Thus, it is equally scratch-resistant and has the same long lifespan. Chameleon offers the following ceramic steel surfaces:

High Gloss

This is the best-selling whiteboard surface. The surface has a high gloss level, though not as high as glass whiteboards. The advantage of the glossy surface is that markings are perfectly visible on it. This makes it ideal for presentations and situations where reading from a distance is necessary, such as in schools.

SatinTones




SatinTones is a ceramic steel surface with a matte appearance. The surface radiates calmness and is perfectly readable from all angles. Moreover, this surface is available in six subtle colour shades. SatinTones is a good alternative to glass whiteboards.

Chalk

Choosing a chalkboard has specific reasons. The main reason is that nuances can be applied with chalk by pressing harder or softer. The Chameleon chalkboard surface is, like the whiteboard surfaces, made with ceramic steel. As a result, Chameleon chalkboards are also perfectly erasable for life. The matte surfaces are available in green and grey.

Projection

This extremely matte surface shows no reflections at all. Projecting onto this board provides the best possible image quality from projectors. The board is writable, but erasing is significantly more challenging. However, using whiteboard spray when erasing will clean the board effectively.

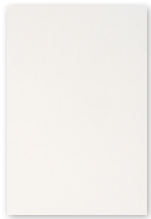
Type	Surface + code	Colour	Description	Writing / erasing	Panel edge colour	Maximum dimension
High Gloss	High Gloss HG100		Most popular whiteboard surface with a high gloss finish	Whiteboard markers / dry erase	Black lacquered	1480x2980 mm
	Satin Snow S200		White whiteboard with a somewhat matte surface, also suitable for projection	Whiteboard markers / dry erase	White lacquered	1180x2980 mm
Satin Tones	Satin Stone S201		Grey whiteboard with a somewhat matte surface	Whiteboard markers / dry erase	Grey lacquered	1180x2980 mm
	Satin Aqua S202		Blue whiteboard with a somewhat matte surface	Whiteboard markers / dry erase	Blue lacquered	1180x2980 mm
	Satin Leaf S203		Green whiteboard with a somewhat matte surface	Whiteboard markers / dry erase	Green lacquered	1180x2980 mm
	Satin Almond S204		Beige whiteboard with a somewhat matte surface	Whiteboard markers / dry erase	Beige lacquered	1180x2980 mm
	Satin Blossom S205		Pink whiteboard with a somewhat matte surface	Whiteboard markers / dry erase	Pink lacquered	1180x2980 mm
	Chalk	Chalk Graphite C300		Colourfast, durable surface with a soft and even colour distribution	Chalk / dry erase	Black lacquered
Chalk Canopy C301			Colourfast, durable surface with a soft and even colour distribution	Chalk / dry erase	Black lacquered	1480x2980 mm
Projection*	Projection		Very matte surface, suitable for projection	Whiteboard markers / wet erase	White lacquered	1480x2980 mm

* Not included on product-level. Price on request.

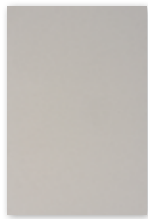


Chameleon Acoustics – colours

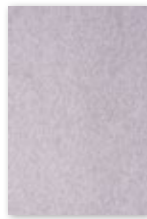
The 9 mm PET felt of Chameleon Acoustics is dyed throughout. We have selected 21 colours, with a strong representation of gray and brown tones.



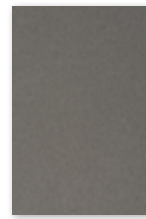
White
P001



Dusty white
P002



White marble
P003



Calm grey
P004



Rough grey
P005



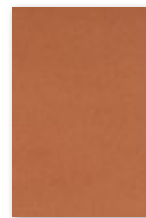
Black lava
P006



Flat white
P007



Hare
P008



Canyon
P009



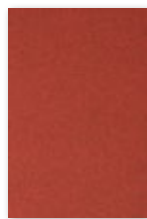
Turmeric
P010



Rust
P011



Tree bark
P012



Magma
P013



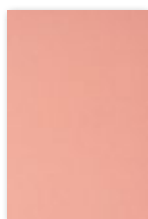
Polar ice
P014



Light blue
quartz
P015



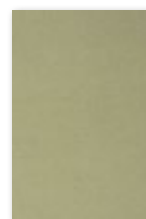
Dusk
P016



Pink rose
P017



Garnet
P018



Iguana
P019



Ocean green
P020



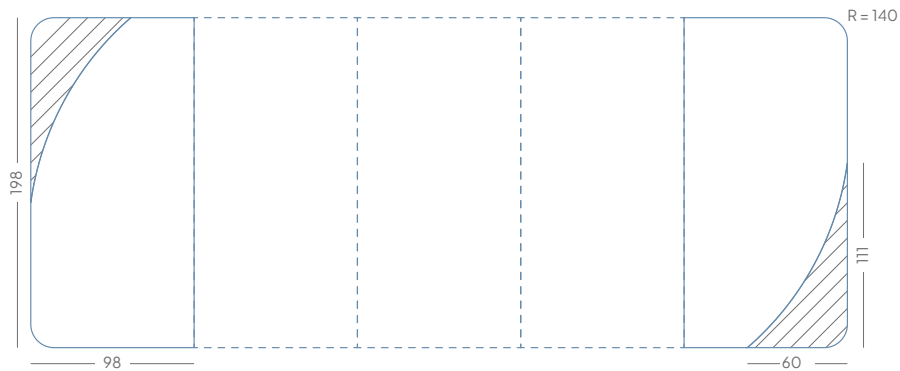
Anthracite
P021

General



Size (cm)	Size whiteboard (cm)	Size PET felt (cm)	Article number	Panels	Gross weight	Nett weight
198 x 196	198 x 98	111 x 60	16006.050 * (+ code)	2	53.46 kg	44.55 kg
198 x 294	198 x 98	111 x 60	16006.051 * (+ code)	3	76.00 kg	64.16 kg
198 x 392	198 x 98	111 x 60	16006.052 * (+ code)	4	100.52 kg	83.77 kg
198 x 490	198 x 98	111 x 60	16006.053 * (+ code)	5	124.05 kg	103.37 kg

* Include the colour code of the PET felt with the article number in your request for a quote or order: [article number + colour code].



Technical

Whiteboard

- Properties:**
- Magnetic and dry-erase
 - Suitable for very intensive use

Thickness: 10 mm

Mounting: TÜV-certified magnetic mounting system

Warranty: 2 years

Surface Warranty: Lifetime on writeability and dry erasure



Construction

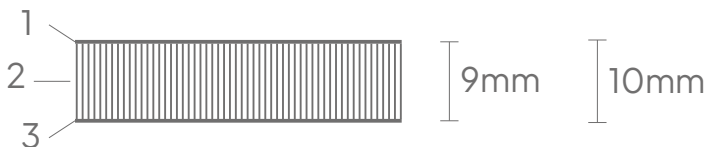
Whiteboard

1. Surface: Ceramic steel 0.4 mm (Indoor Air Quality Certified to SCS-EC10.3-2014 v4.0)

2. Carrier: MDF 9 mm (FSC 70%)

3. Backing: 0.4 mm galvanized steel sheet

Finish: Painted edges, see page 3



Technical

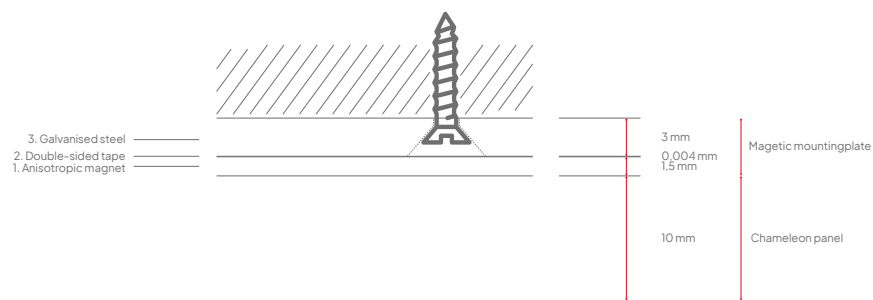
PET felt

Properties:	Acoustic
Material:	100% recyclable PET felt (60% recycled content)
Thickness:	Approximately 14.5 mm (including mounting hardware)
Material thickness:	9 mm (10 mm incl. backing)
Acoustic values:	α_w 0,25 / SAA 0,30
Fire resistance:	Tested according to EN13501: B-s1, d0
Installation:	Remountable magnetic installation
Warranty:	2 years

Construction

Magnetic mounting plate

1. Magnetic sheet:	Anisotropic magnet, 1,5 mm thick
2. Adhesive layer:	Double-sided tape
3. Mounting plate:	Galvanised-steel plate, 3 mm thick, with holes for screwing



Packaging

Whiteboard

Type:	Crate
Content:	Chameleon whiteboard panel, mounting plate, screws, dowels and mounting instructions
Packaging unit:	1 unit
Materials:	Wood, cardboard, polyethylene protection tube
Size:	Size board + 3 cm width, 3 cm depth, 4 cm height

Packaging

PET felt

Type:	PET felt panels are kept in its leftover form, packed in shrink wrap afterwards
Contents:	Chameleon Sharp Acoustics panel and assembly manual
Packaging unit:	1 unit
Materials:	Shrink wrap, corrugated cardboard, EPS bumper Large orders: bulk on pallet