

# Chameleon Sharp Wall Acoustics

## Specifications

---

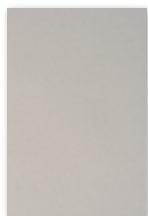


# Colours

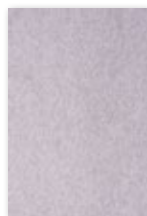
The 9 mm PET felt from Chameleon Sharp Wall Acoustics is dyed-through. We have selected 21 colors, with a strong representation in shades of gray and brown.



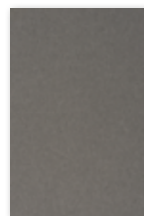
White  
P001



Dusty white  
P002



White marble  
P003



Calm grey  
P004



Rough grey  
P005



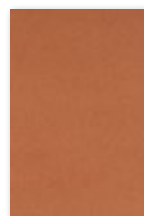
Black lava  
P006



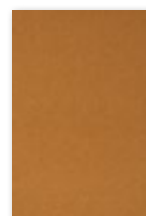
Flat white  
P007



Hare  
P008



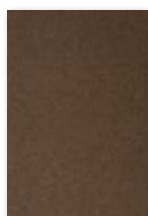
Canyon  
P009



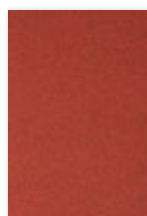
Turmeric  
P010



Rust  
P011



Tree bark  
P012



Magma  
P013



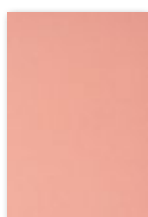
Polar ice  
P014



Light blue  
quartz  
P015



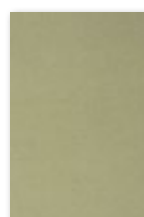
Dusk  
P016



Pink rose  
P017



Garnet  
P018



Iguana  
P019



Ocean green  
P020

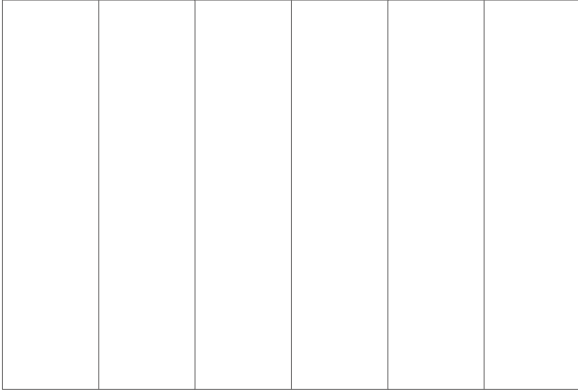


Anthracite  
P021

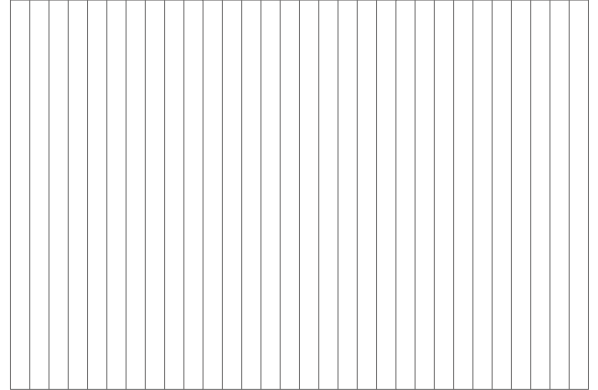
# Designs

As standard, the panel is produced without a pattern. Optionally, you can choose from four V-groove patterns, which are cut into the PET felt to enhance the aesthetic value of the panel.

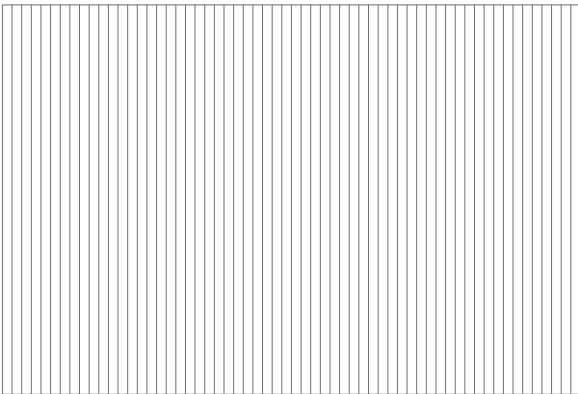
A09



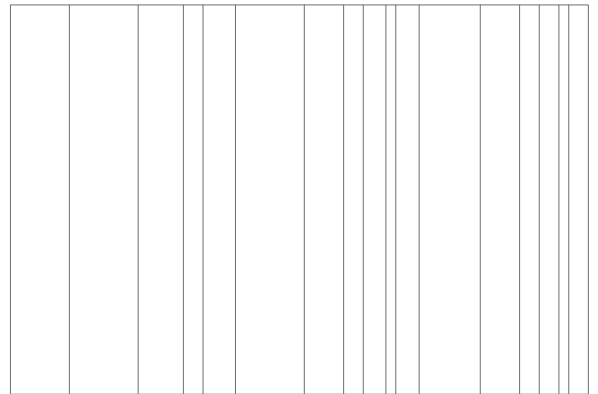
A10



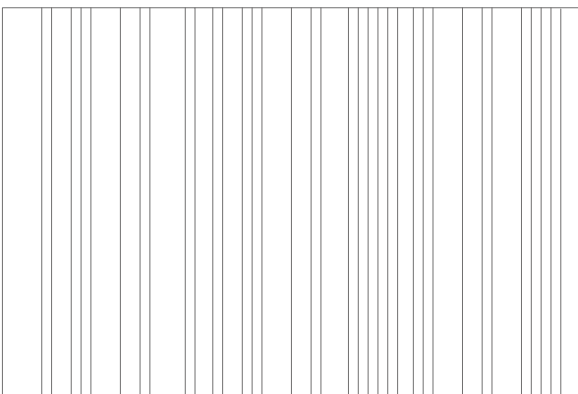
A09



A09



A09



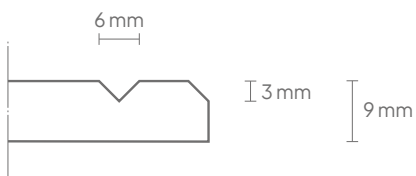
## General

Size (cm)	Art. nr.	Cut-out code (optional)	Number of panels	Gross weight	Net weight
198 x 59 cm	11210.201 *	A09, A10, A11, A12, A13	2	11,34 KG	9,00 KG
198 x 118 cm	11210.202 *	A09, A10, A11, A12, A13	3	17,01 KG	13,50 KG
198 x 98 cm	11210.203 *	A09, A10, A11, A12, A13	4	22,68 KG	18,00 KG
198 x 48 cm	11210.204 *	A09, A10, A11, A12, A13	5	28,08 KG	22,50 KG

\* When requesting a quote or placing an order, please include the article number followed by the color code of the PET felt, optionally followed by the cut-out code: [article number + color code + cut-out code (optional)].

## Technical

<b>Properties:</b>	Acoustic
<b>Material:</b>	100% recyclable PET felt (of which 60% recycled)
<b>Material thickness:</b>	9 mm
<b>Acoustic values:</b>	Directly to the wall: $\alpha_w$ 0,25 / SAA 0,30 50 mm air gap: $\alpha_w$ 0,55 / SAA 0,70 100 mm air gap: $\alpha_w$ 0,75 / SAA 0,76
<b>Fire resistance:</b>	Tested according to EN13501: B-s1, d0
<b>Installation:</b>	Adhesive (not included). For walls with a smooth texture: 51505.014. For walls with a rough texture: 51505.007.
<b>Warranty:</b>	2 years
<b>Optional V-cut pattern:</b>	3 mm deep, $\pm$ 6 mm wide
<b>Edge finishing:</b>	Bevel-cut edge, 3 mm



## Packaging

<b>Type:</b>	Schink foil
<b>Contents:</b>	Chameleon Sharp Wall Acoustics panel and assembly manual
<b>Packaging unit:</b>	1 unit per panel
<b>Materials:</b>	Individual pieces: shrink film, corrugated cardboard, EPS bumper Large orders: bulk on pallet
<b>Dimensions per unit:</b>	Panel dimensions + 4 cm all around. Total thickness: approximately 3 cm.