

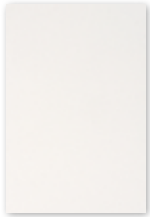
Chameleon Creatives

Specifications

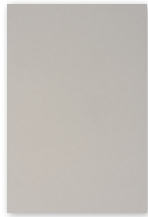


Colours

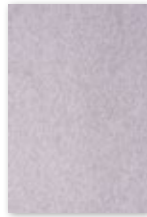
The 9 mm PET felt from Chameleon Sharp Acoustics is dyed throughout. During creative cutouts, the color remains visible within the cut. We have selected 21 colors, with a strong representation of gray tones and brown tones.



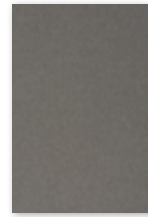
White
P001



Dusty white
P002



White marble
P003



Calm grey
P004



Rough grey
P005



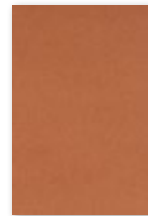
Black lava
P006



Flat white
P007



Hare
P008



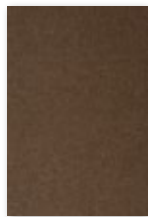
Canyon
P009



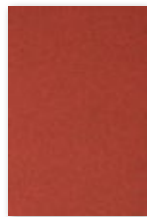
Turmeric
P010



Rust
P011



Tree bark
P012



Magma
P013



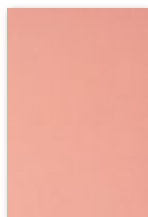
Polar ice
P014



Light blue
quartz
P015



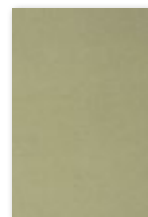
Dusk
P016



Pink rose
P017



Garnet
P018



Iguana
P019



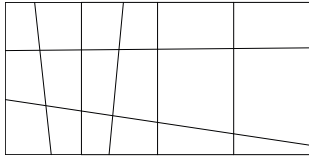
Ocean green
P020



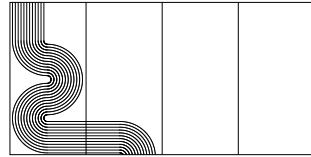
Anthracite
P021

Designs

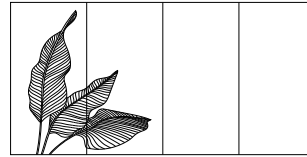
The Chameleon Creatives walls have dimensions of 240×480 cm, consisting of panels measuring 240×120 cm each. Choose one of the eight available patterns and specify it along with the color code of the PET felt when placing your order.



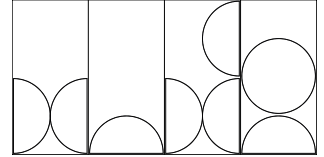
CPT101



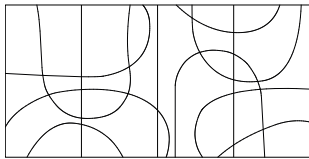
CPT102



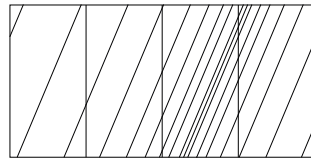
CPT103



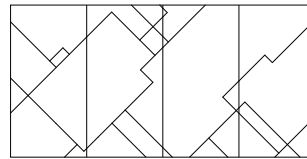
CPT104



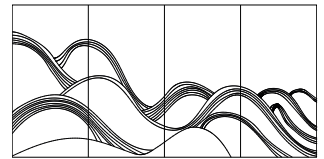
CPT105



CPT106



CPT107

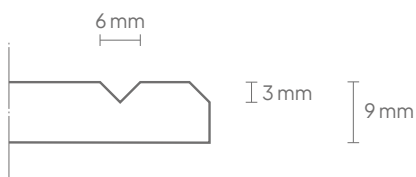


CPT108

Technical

Article number:	11210.221*
Properties:	Acoustic
Material:	100% recyclable PET felt (60% recycled)
Material thickness:	9 mm
Net weight (4 panels):	50,11 kg
Gross weight (4 panels):	55,87 kg
Acoustic values:	Directly to the wall: α_w 0,25 / SAA 0,30 50 mm air gap: α_w 0,55 / SAA 0,70 100 mm air gap: α_w 0,75 / SAA 0,76
Installation:	Kit (not included). For smooth walls: 51505.014. For textured walls: 51505.007.
Fire resistance	Tested according to EN13501: B-s1, d0
Warranty	2 years
V-cut pattern:	V-cut pattern: 3 mm deep, \pm 6 mm wide
Edge finishing:	Bevel-cut edge, 3 mm

* When requesting a quote or placing an order, please specify the color code of the PET felt first with the article number, optionally followed by the cut code: [Article number + Color code + Cut code].



Packaging

Type:	Shrink film
Content:	Chameleon Creatives panel and assembly instructions
Packaging unit:	1 piece per panel
Materials:	Individual items: shrink film, corrugated cardboard, EPS buffers Large orders: bulk on pallet
Dimensions per panel:	Panel size + 4 cm all around. Total thickness: approx. 3 cm.