

# Chameleon Harmonica Workwall

## Specifications

---



# Chameleon quality

The core of the Chameleon range is formed by the whiteboard. A Chameleon whiteboard can be recognized for its quality, which is visible in four ways:

1. Durability: Chameleon whiteboards are 10 mm thick with a robust, water-repellent MDF core (FSC-certified, see sustainability).
2. Surface: Chameleon whiteboards feature high-quality magnetic enamel steel, recognizable by a smooth surface without imperfections. We offer a lifetime warranty on writing and erasing on all enamel surfaces. Below is an overview of our enamel surface options.
3. Finish: Chameleon whiteboards are machine-cut and then hand-finished. We pay great attention to the finishing process.
4. Installation: Chameleon uses a unique TÜV-certified mounting system that works with magnetic plates.



## Chameleon surfaces

### What is Ceramic Steel?

All Chameleon surfaces on this page feature a top layer of ceramic steel. This is an enamel layer that, in terms of hardness and smoothness, is comparable to glass. So, it's just as scratch-resistant and has the same long lifespan. Chameleon offers the following ceramic steel surfaces:

### High Gloss

This is the most popular whiteboard surface. It has a high gloss level, though slightly less than glass whiteboards. The benefit of the glossy surface is that markings are perfectly visible, making it ideal for presentations and situations where reading from a distance is important, such as in schools.

### SatinTones







SatinTones is a ceramic steel surface with a matte finish. The surface exudes calmness and is perfectly readable from all viewing angles. Additionally, this surface is available in six subtle color shades. SatinTones is a good alternative to glass whiteboards.

### Chalk

Choosing a chalkboard comes with specific reasons. The most important is that chalk allows for nuances by pressing harder or softer. Chameleon chalkboard surfaces, like the whiteboard surfaces, are made with ceramic steel. This ensures that Chameleon chalkboards can be wiped clean perfectly, even after long use. The matte surfaces are available in green and gray.

### Projection

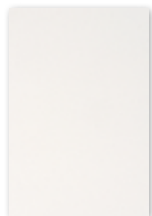
This extremely matte surface shows no reflections. Projecting on this board delivers the best possible image quality from projectors. The board is writable, but erasing is more difficult. However, with the use of whiteboard spray, it can be cleaned effectively.

Type	Surface + code	Colour	Description	Writing / erasing	Panel edge colour	Maximum dimension
High Gloss	High Gloss HG100		Most popular whiteboard surface with a high gloss finish	Whiteboard markers / dry erase	White lacquered	1480x2980 mm
	Satin Snow S200		White whiteboard with a somewhat matte surface, also suitable for projection.	Whiteboard markers / dry erase	White lacquered	1180x2980 mm
SatinTones *	Satin Stone S201		Grey whiteboard with a somewhat matte surface, also suitable for projection.	Whiteboard markers / dry erase	Grey lacquered	1180x2980 mm
	Satin Aqua S202		Blue whiteboard with a somewhat matte surface, also suitable for projection.	Whiteboard markers / dry erase	Blue lacquered	1180x2980 mm
	Satin Leaf S203		Green whiteboard with a somewhat matte surface, also suitable for projection.	Whiteboard markers / dry erase	Green lacquered	1180x2980 mm
	Satin Almond S204		Beige whiteboard with a somewhat matte surface, also suitable for projection.	Whiteboard markers / dry erase	Beige lacquered	1180x2980 mm
	Satin Blossom S205		Pink whiteboard with a somewhat matte surface, also suitable for projection.	Whiteboard markers / dry erase	Pink lacquered	1180x2980 mm
Chalk *	Chalk Graphite C300		Colourfast, durable surface with a soft and even colour distribution	Chalk / dry erase	Black lacquered	1180x2980 mm
	Chalk Canopy C301		Colourfast, durable surface with a soft and even colour distribution	Chalk / dry erase	Black lacquered	1480x2980 mm
Projection **	Projection		Very matte surface, suitable for projection	Whiteboard markers / wet erase	White lacquered	1480x2980 mm

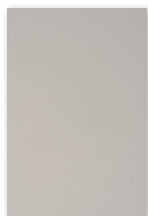


# Colours

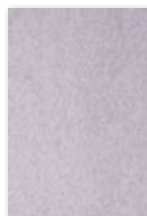
The 9 mm PET felt from Chameleon Sharp Acoustics is colored throughout. With creative cutouts, the color is also visible in the cutout. We have selected 21 colors, with a strong representation of gray and brown tones.



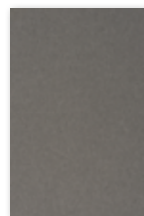
White  
P001



Dusty white  
P002



White marble  
P003



Calm grey  
P004



Rough grey  
P005



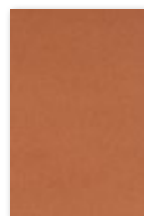
Black lava  
P006



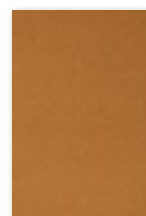
Flat white  
P007



Hare  
P008



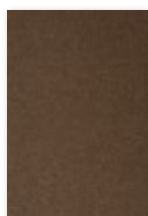
Canyon  
P009



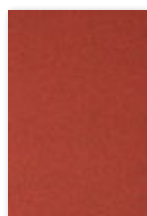
Turmeric  
P010



Rust  
P011



Tree bark  
P012



Magma  
P013



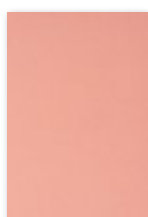
Polar ice  
P014



Light blue  
quartz  
P015



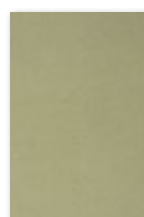
Dusk  
P016



Pink rose  
P017



Garnet  
P018



Iguana  
P019



Ocean green  
P020

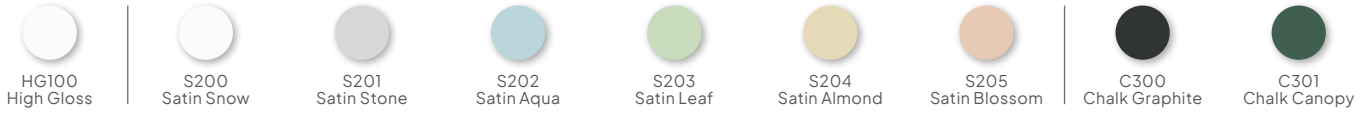


Anthracite  
P021

## General

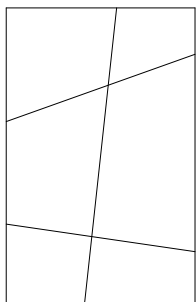
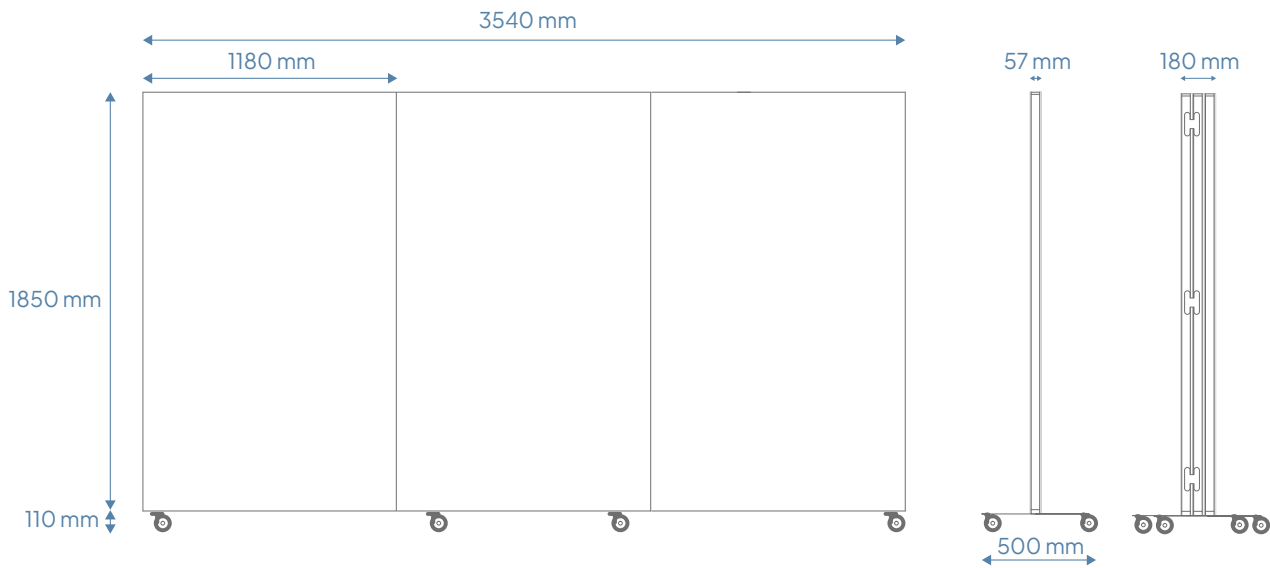
Think big because you can! The 3-part version of this mobile folding wall has a writing surface of up to 3.5 meters wide. Each part can accommodate 2 panels (front and back) with the choice of:

- Ceramic steel writing surface. Standard equipped with High Gloss (HG-100); choose the corresponding item number and surface code for a different surface (see p. 3).
- A PET felt acoustic panel available in 21 colors (see p. 4) and optionally with a print (only on White - P001) or the V-cut pattern DP01.



Size (cm)	Art. no.	Description	Net Weight
196,5 x 118	14013.307*	Frame Harmonica Workwall, 1-piece	43,15
196,5 x 236	14013.308*	Frame Harmonica Workwall, 2-pieces	83,10
196,5 x 354	14013.310*	Frame Harmonica Workwall, 3-pieces	123,00
185 x 118	16001.199	Ceramic steel writing surface	26,00
185 x 118	11208.199 [Color Code]	PET felt panel	14,00
185 x 118	11208.198 [Color Code] [Cutout Code]	PET felt panel, including pattern	± 13,80
185 x 118	11208.197	PET felt panel (White - P001), including printing	14,00

\* Frame excluding panels. The panels (2 per frame part) need to be ordered separately.



DP01

## Technical

Whiteboard panel

<b>Properties:</b>	- Magnetic and dry-erase - Suitable for very intensive use
<b>Thickness:</b>	7 mm
<b>Installation:</b>	TÜV-certified magnetic mounting system, on the frame
<b>Warranty:</b>	2 years
<b>Surface Warranty:</b>	Lifetime warranty on writability and dry erasing



## Technical

PET felt panel

<b>Properties:</b>	- Acoustic - Magnetic for glass board magnets
<b>Thickness:</b>	7 mm
<b>Installation:</b>	Magnetic mounting system, on the frame
<b>Mounting:</b>	Velcro
<b>Warranty:</b>	2 years
<b>Optional V-cut pattern:</b>	4.5 mm deep, ± 8.5 mm wide
<b>Warranty:</b>	2 years
<b>Surface Warranty:</b>	Lifetime warranty on writability and dry erasing

## Construction

Whiteboard panel

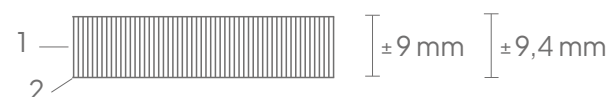
<b>1. Surface:</b>	0.4mm ceramic steel (Indoor Air Quality Certified to SCS-EC10.3-2014 v4.0)
<b>2. Carrier:</b>	9mm MDF (FSC 70%)
<b>3. Backing:</b>	0.4mm galvanized steel sheet
<b>4. Finishing:</b>	Black lacquered edges



## Construction

PET felt panel

<b>1. Surface:</b>	PET felt panel, approximately 9 mm thick
<b>2. Backing:</b>	0.4 mm galvanized steel sheet



## Construction

### Frame components

<b>Frame</b>	<ul style="list-style-type: none"><li>- Pine wood outer frame, black lacquered</li><li>- Poplar wood inner frame, unlacquered</li><li>- 6 or 3 robust hinges (for 3-part or 2-part frame)</li></ul>
<b>Base</b>	Black powder-coated steel
<b>Wheels</b>	Per frame part: 2 robust black wheels, one of which is brake-equipped
<b>Magnetic strips for mounting</b>	14 pieces
<b>Panels</b>	8 pieces

## Packaging

### Whiteboard panel

<b>Type:</b>	Crate
<b>Content:</b>	Chameleon whiteboard panel
<b>Packaging unit:</b>	1 unit
<b>Materials:</b>	Wood, corrugated cardboard, foam buffer
<b>Dimensions:</b>	1890 x 1230 x 110 mm

## Packaging

### PET felt panel

<b>Type:</b>	Shrink wrap
<b>Content:</b>	Chameleon PET felt panel
<b>Packaging unit:</b>	1 unit
<b>Materials:</b>	Shrink wrap, corrugated cardboard, EPS bumper
<b>Dimensions:</b>	1890 x 1230 x 110 mm

## Packaging

### Frame

<b>Type:</b>	Pallet / shrink wrap
<b>Content:</b>	Harmonica Workwall frame
<b>Packaging unit:</b>	1 unit
<b>Materials:</b>	Wooden package, shrink wrap
<b>Pallet dimension:</b>	1300 x 2100 mm