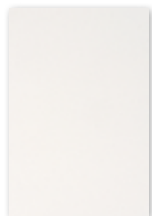


Chameleon 9 mm Single Layer Specifications

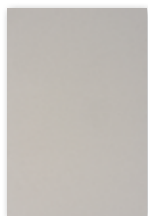


Colours

The 9 mm PET felt of Chameleon 9 mm Single Layer is colored throughout. We have selected 21 colors, with strong representation in shades of gray and brown.



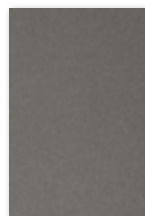
White
P001



Dusty white
P002



White marble
P003



Calm grey
P004



Rough grey
P005



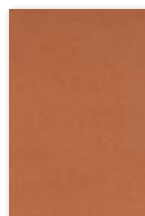
Black lava
P006



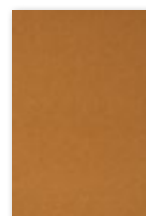
Flat white
P007



Hare
P008



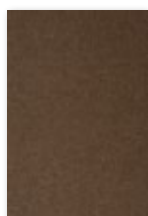
Canyon
P009



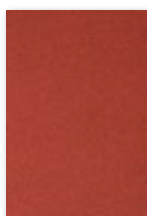
Turmeric
P010



Rust
P011



Tree bark
P012



Magma
P013



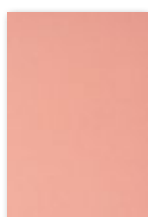
Polar ice
P014



Light blue
quartz
P015



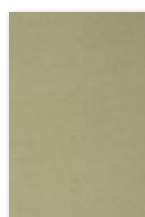
Dusk
P016



Pink rose
P017



Garnet
P018



Iguana
P019



Ocean green
P020

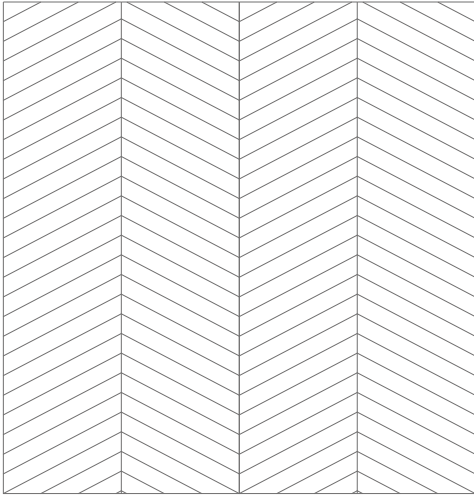


Anthracite
P021

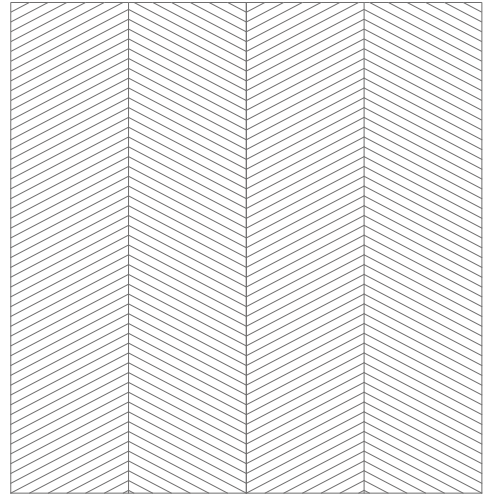
Designs

By default, the panel is produced without a pattern. Optionally, you can choose from eight V-groove patterns, which are cut into the PET felt to enhance the panel's aesthetic value.

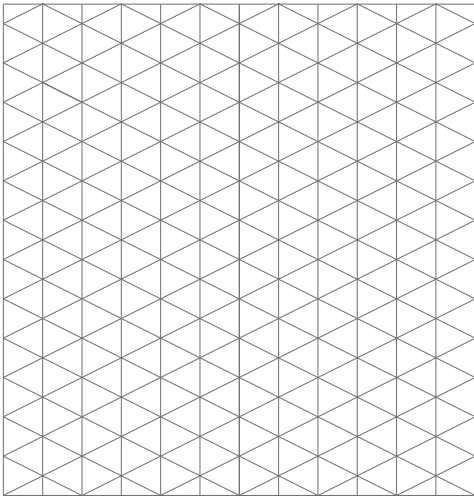
A01



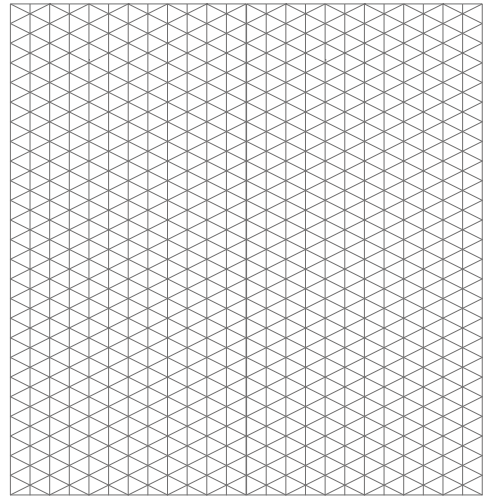
A02



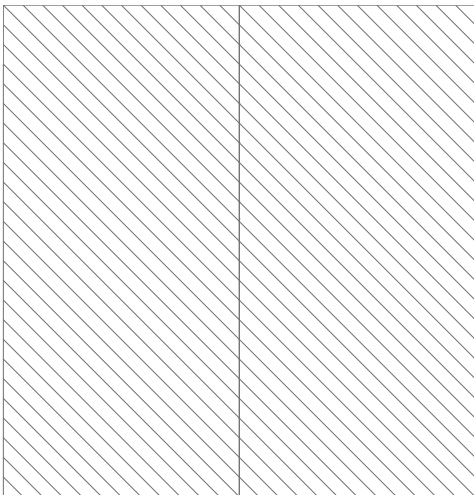
A03



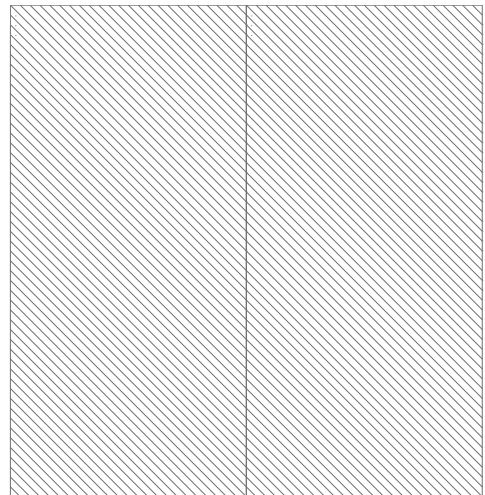
A04



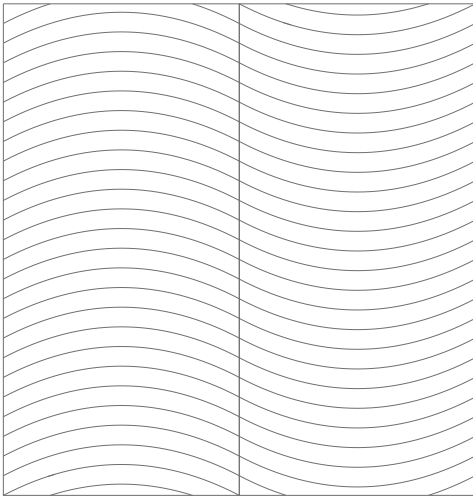
A05



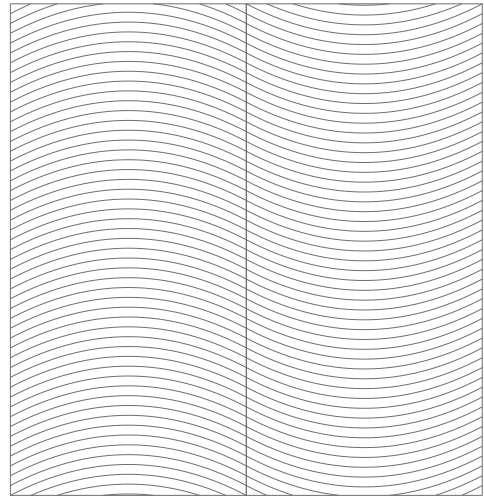
A06



A07



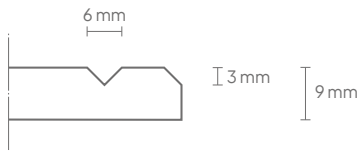
A08



Technical

Article number:	11210.999SL *
Properties:	Acoustic
Material:	100% recyclable PET felt (60% recycled)
Material thickness:	9 mm
Dimensions:	Fully custom in width and up to 320 cm in height
Weight (panel of 120x220 cm)	Gross weight: 5.82 kg Net weight: 4.5 kg
Acoustic values:	Directly to the wall: α_w 0,25 / SAA 0,30 50 mm air gap: α_w 0,55 / SAA 0,70 100 mm air gap: α_w 0,75 / SAA 0,76
Fire resistance:	Tested according to EN13501: B-s1, d0
Installation:	Kit. For walls with a smooth texture: 51505.014. For walls with a rough texture: 51505.007.
Warranty:	2 years
V-cut pattern:	3 mm deep, \pm 6 mm wide
Edge finishing:	Bevel-cut edge, 3 mm

* Include the colour code of the PET felt first in the article number, optionally followed by the cut-out code, in your request for a quote or order: [article number + colour code + cut-out code].



Packaging

Type:	Shrink wrap
Content:	Chameleon Sharp Acoustics panel and assembly manual
Packaging unit:	1 unit
Materials:	Shrink wrap, corrugated cardboard, EPS bumper
Dimensions:	Panel dimensions + 3 cm width, 3 cm depth, 4 cm height