

Chameleon Sharp Glassboard

Specifications

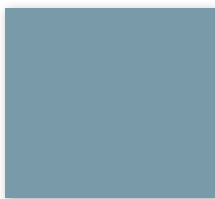


Chameleon quality

The core of the Chameleon range is formed by the whiteboard. A Chameleon whiteboard can be recognized for its quality, which is visible in four ways:

1. Durability: Chameleon whiteboards are 10 mm thick with a robust, water-repellent MDF core (FSC-certified, see sustainability).
2. Surface: Chameleon whiteboards feature high-quality magnetic enamel steel, recognizable by a smooth surface without imperfections. We offer a lifetime warranty on writing and erasing on all enamel surfaces. Below is an overview of our enamel surface options.
3. Finish: Chameleon whiteboards are machine-cut and then hand-finished. We pay great attention to the finishing process.
4. Installation: Chameleon uses a unique TÜV-certified mounting system that works with magnetic plates.

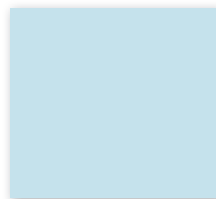
Colours



Breeze
G100



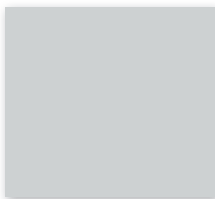
Sky
G101



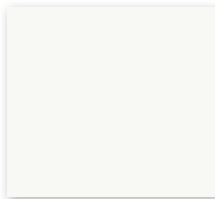
Frost
G102



Steel
G103



Subtle
G104



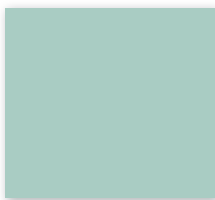
Just
G105



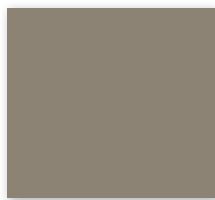
Thyme
G106



Gum tree
G107



Jade light
G108



Wolf
G109



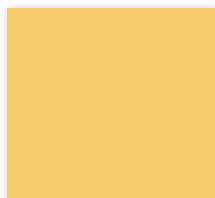
Chocolate milk
G110



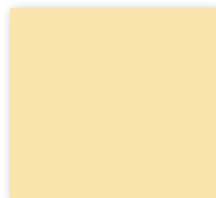
Tuscany
G111



Ochre
G112



Buttery
G113



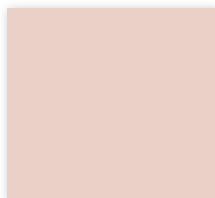
Vanilla ice
G114



Raspberry
G115



Blush
G116



Hint of pink
G117

General

Size (cm)	Article number	Gross weight	Nett weight
98 x 98	14800.300 [colour code]	16,70	15,70
98 x 148	14800.301 [colour code]	23,95	22,45
98 x 198	14800.302 [colour code]	33,40	31,40



Technical

Characteristics:	- Magnetic for glassboard magnets and dry-erasable - Suitable for very intensive use
Thickness:	4.5 mm
Mounting:	Simple magnetic mounting
Warranty:	2 years
Surface warranty:	25 years

Construction

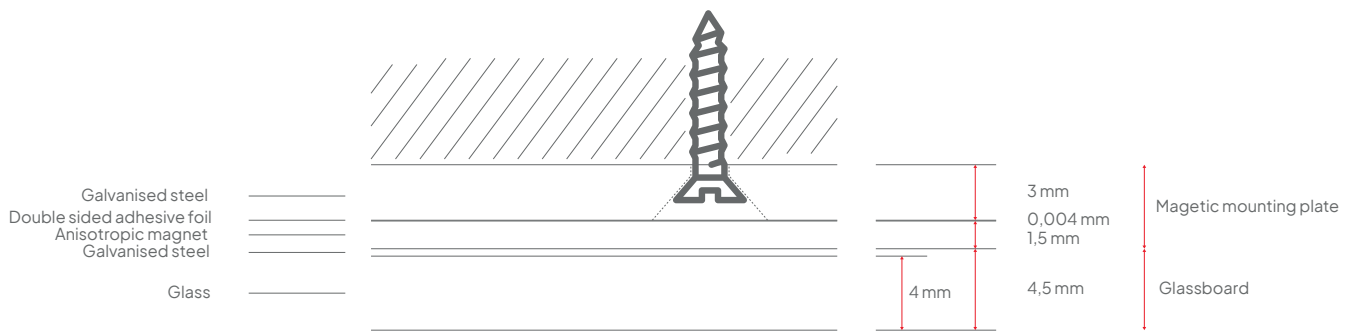
1. Surface:	Hardened safety glass of 4mm
2. Backing:	Galvanised steel of 0.4 mm
Finishing:	Polished edges (matt)



Construction

Magnetic mounting plate

5. Magnetic sheet:	Anisotropic magnet, 1,5 mm thick
6. Adhesive layer:	Double-sided tape
7. Mounting plate:	Gegalvanised-steel plate, 3 mm thick, with holes for screwing



Packaging

Type:	Crate
Content:	Chameleon glassboard panel, mounting plate, screws, dowels and mounting instructions
Packaging unit:	1 unit
Materials:	Cardboard, EPS buffers
Size:	98 x 98 cm: 1053 x 1053 x 51 mm 98 x 148 cm: 1053 x 1553 x 51 mm 98 x 198 cm: 1053 x 2053 x 51 mm