

Chameleon Sharp Glass Wall

Specifications



Chameleon quality

Chameleon Glassboards and Glass Walls feature extra clear, low-iron glass. As opposed to normal glass, these products do not have a green hue. As such, the 18 different glassboard colours will come out perfectly.

Material: tempered safety glass, extra clear.

Thickness: 4-mm glass with 0.4-mm galvanised backing sheet.

Wall depth: 5 mm.

Use: The panels are suitable for dry-erase markers and are magnetised for glassboard magnets.

Finish: All edges feature a matte finish.

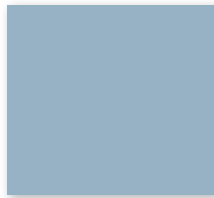
Installation: The panels can be mounted on the wall using our certified magnetic mounting system. This makes it easy to ensure the panels are level and allows you to quickly connect multiple panels.

Colours: Chameleon Glassboards and Glass Walls are available in 18 different colours.

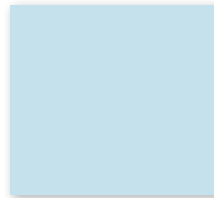
Colours



Breeze
G100



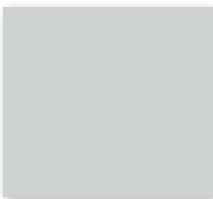
Sky
G101



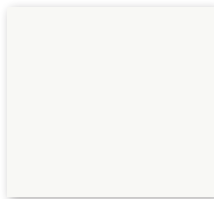
Frost
G102



Steel
G103



Subtle
G104



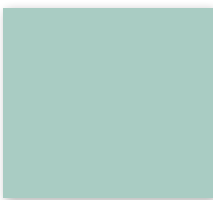
Just
G105



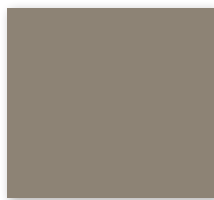
Thyme
G106



Gum tree
G107



Jade light
G108



Wolf
G109



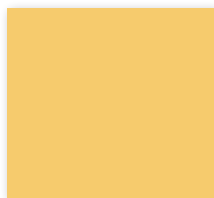
Chocolate milk
G110



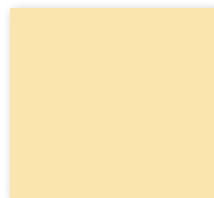
Tuscany
G111



Ochre
G112



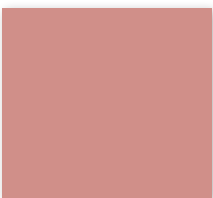
Buttery
G113



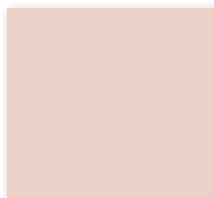
Vanilla ice
G114



Raspberry
G115



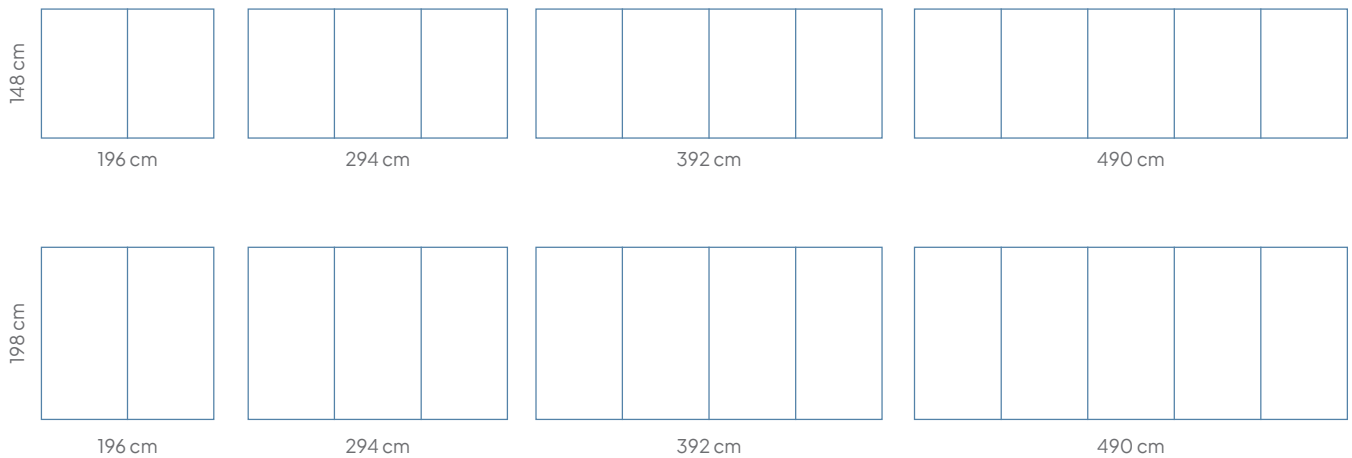
Blush
G116



Hint of pink
G117

General

Size (cm)	Article number	Amount of panels	Gross weight	Nett weight
148 x 196	14800.310 [colour code]	2	47,9 kg	44,9 kg
148 x 294	14800.311 [colour code]	3	71,85 gk	67,35 kg
148 x 392	14800.312 [colour code]	4	95,8 kg	89,8 kg
148 x 490	14800.313 [colour code]	5	119,75 kg	112,25 kg
198 x 196	14800.320 [colour code]	2	66,8 kg	62,8 kg
198 x 294	14800.321 [colour code]	3	100,2 kg	94,2 kg
198 x 392	14800.322 [colour code]	4	133,6 kg	125,6 kg
198 x 490	14800.323 [colour code]	5	167 kg	157 kg



Technical

Characteristics:	- Magnetic for glassboard magnets and dry-erasable - Suitable for very intensive use
Thickness:	4.5 mm
Mounting:	Simple magnetic mounting
Warranty:	2 years
Surface warranty:	25 years

Construction

Glassboard panel

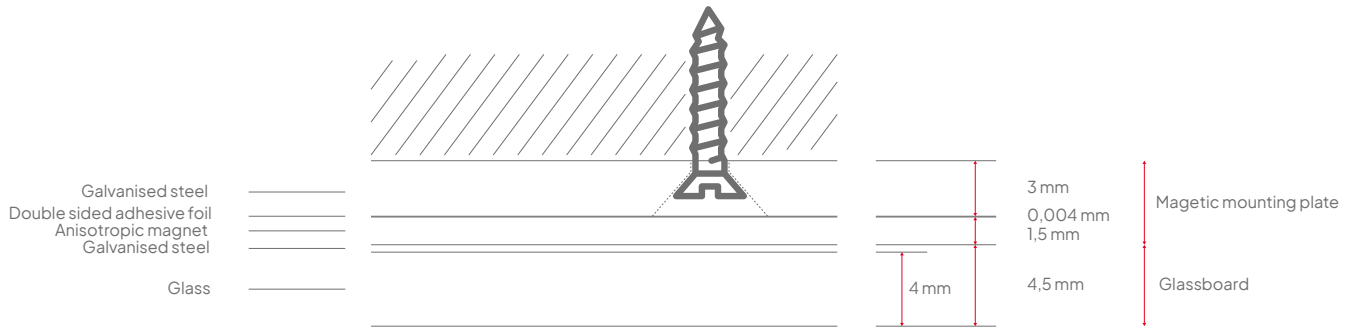
1. Surface:	Hardened safety glass of 4mm
2. Backing:	Galvanised steel of 0.4 mm
Finishing:	Polished edges (matt)



Construction

Magnetic mounting plate

5. Magnetic sheet:	Anisotropic magnet, 1,5 mm thick
6. Adhesive layer:	Double-sided tape
7. Mounting plate:	Gegalvanised-steel plate, 3 mm thick, with holes for screwing



Packaging

Type:	Crate
Content:	Chameleon glassboard panel, mounting plate, screws, dowels and mounting instructions
Packaging unit:	1 unit
Materials:	Cardboard, EPS buffers
Size:	98 x 98 cm: 1053 x 1053 x 51 mm 98 x 148 cm: 1053 x 1553 x 51 mm 98 x 198 cm: 1053 x 2053 x 51 mm