

# Chameleon Sharp Acoustics

## Specifications



# 9 mm PET-felt

## Material

Chameleon Acoustics consists of 100% recyclable polyethylene terephthalate (PET), part of which comes from recycled PET bottles. These materials are processed into a sound-absorbing felt with a soft structure.

## Thickness and dimensions

The thickness of the PET felt panels is 9 or 18 mm. The maximum panel size is 120 x 240 cm.

## Fire resistance

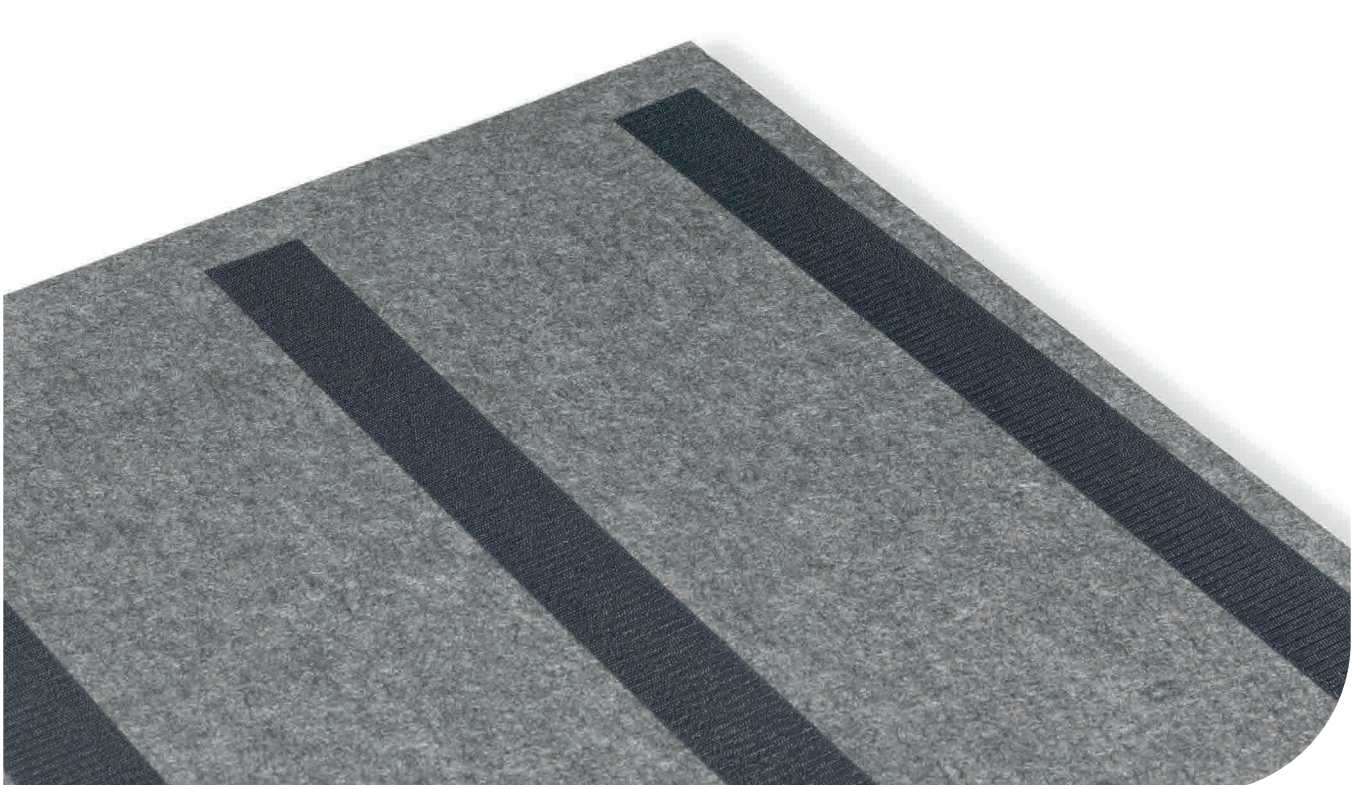
EN13501	B-s1, d0
---------	----------

## Acoustics

9 mm Chameleon Acoustics is tested according to ISO 354-2006; NRC 0.3.

## Mounting

Chameleon Acoustics panels feature Velcro mounting. This has the advantage that the panels are quick and simple to assemble, can be reused and that materials can be separated in the future. On request, we can also supply panels without Velcro for gluing to the wall.



# Colours

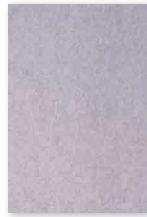
Chameleon Sharp Acoustics' 9 mm PET felt is a through-and-through colour. In creative cut-outs, the colour is also visible in the cut-out. We have selected 21 colours, with strong representation in greys and browns.



White  
P001



Dusty white  
P002



White marble  
P003



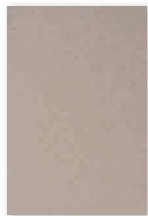
Calm grey  
P004



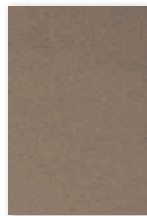
Rough grey  
P005



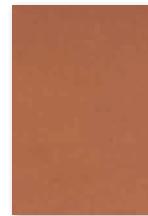
Black lava  
P006



Flat white  
P007



Hare  
P008



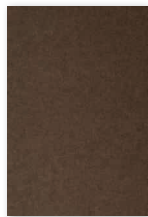
Canyon  
P009



Turmeric  
P010



Rust  
P011



Tree bark  
P012



Magma  
P013



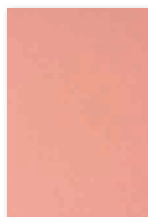
Polar ice  
P014



Light blue  
quartz  
P015



Dusk  
P016



Pink rose  
P017



Garnet  
P018



Iguana  
P019



Ocean green  
P020

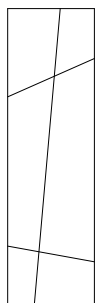


Anthracite  
P021

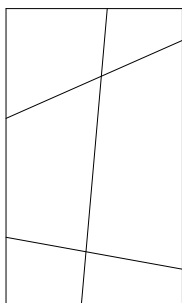
## General

Size (cm)	Article number	Cut-out code (optional)	Nett weight
198 x 59	11208.001 *	SA01	5,00
198 x 118	11208.002 *	SA01	10,70
198 x 98	11208.003 *	SA01	8,40
198 x 48	11208.004 *	SA01	4,20
148 x 98	11208.005 *	SA01	7,00
148 x 48	11208.006 *	SA01	3,00
98 x 98	11208.007 *	SA01	4,80
98 x 48	11208.008 *	SA01	2,00
Maatwerk	11208.998 *	SA01	N.t.b.

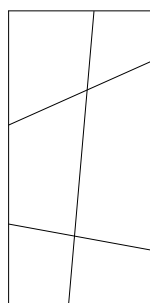
\* When requesting a quote or placing an order, please provide the article number followed by the color code of the PET felt, optionally followed by the cut-out code: [article number + color code + cut-out code (optional)].



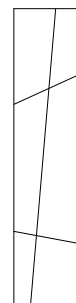
198 x 59



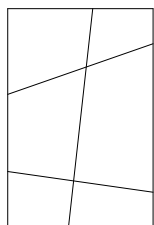
198 x 118



198 x 98



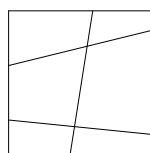
198 x 48



148 x 98



148 x 48



98 x 98



98 x 48

## Technical

<b>Characteristics:</b>	Acoustic
<b>Thickness:</b>	± 12,3 mm (including hanging)
<b>Acoustic value:</b>	NRC: 0.3
<b>Fire resistance:</b>	EN13501: B-s1, d0
<b>Mounting:</b>	Velcro
<b>Warranty:</b>	2 years
<b>Optional V-cut pattern:</b>	4.5 mm deep, ± 8.5 mm wide

## Technical

1. **Surface:** PET felt panel,  $\pm 9$  mm thick

---

2. **Mounting material:** Velcro,  $\pm 3.3$  mm thick

---



## Packaging

**Type:** Shrink wrap

---

**Content:** Chameleon Creatives PET felt panel

---

**Packaging unit:** 1 unit

---

**Materials:** Wood, cardboard, polyethylene protective film

---

**Size:** Sign size + 3 cm width, 3 cm depth, 4 cm height

---