

# Chameleon Harmonica Workwall

## Specifications

---



# Chameleon quality

The core of the Chameleon range is formed by the whiteboard. A Chameleon whiteboard can be recognized for its quality, which is visible in four ways:

1. Strength: Chameleon whiteboards are 10 mm thick with a sturdy water-repellent MDF core (FSC® certified - license code: FSC-C130761).
2. Surface: Chameleon whiteboards feature high-quality magnetic enamel steel, recognizable by a smooth surface without imperfections. We offer a lifetime guarantee on writing and erasing on all enamel surfaces. See below for an overview of our enamel surface options.
3. Finish: Chameleon whiteboards are machine-cut and then hand-finished. We pay close attention to the finishing.
4. Installation: Chameleon employs a unique TÜV-certified mounting system that uses magnetic plates.



Code	Surface	Description	Writing / erasing	Panel edge colour	Maximum dimension
W	Whiteboard white	Most popular whiteboard surface with a high gloss finish	Whiteboard markers / dry erase	White lacquered	1480x2980 mm
B	Chalkboard - grey	Colourfast, durable surface with a soft and even grey colour distribution	Chalk / dry erase	Black lacquered	1180x2980 mm
G	Chalkboard - green	Colourfast, durable surface with a soft and even green colour distribution	Chalk / dry erase	Black lacquered	1480x2980 mm
L	Low Gloss	White whiteboard with a slightly matte surface, also suitable for projection	Whiteboard markers / dry erase	White lacquered	1480x2980 mm
GL	Grey Low Gloss	Light grey matte whiteboard surface	Whiteboard markers / dry erase	White lacquered	1180x2980 mm
P	Projection*	Very matte surface, suitable for projection	Whiteboard markers / wet erase	White lacquered	1480x2980 mm

\* Not included at the product level.



# Colors

The 9mm PET felt of Chameleon Harmonica Workwall is dyed through and through. In creative cutouts, the color is also visible in the cutout. We have selected 21 colors, with strong representation in shades of gray and brown.



White  
P001



Dusty white  
P002



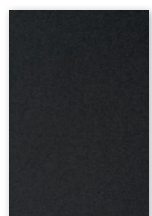
White marble  
P003



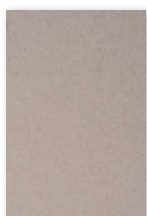
Calm grey  
P004



Rough grey  
P005



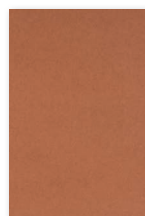
Black lava  
P006



Flat white  
P007



Hare  
P008



Canyon  
P009



Turmeric  
P010



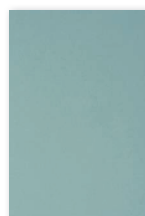
Rust  
P011



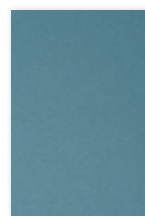
Tree bark  
P012



Magma  
P013



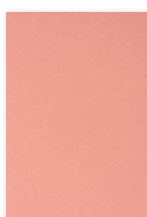
Polar ice  
P014



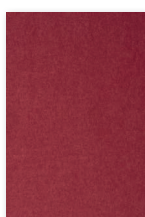
Light blue  
quartz  
P015



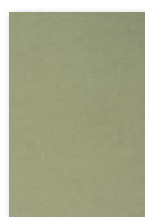
Dusk  
P016



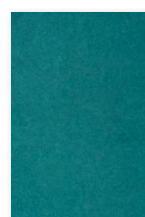
Pink rose  
P017



Garnet  
P018



Iguana  
P019



Ocean green  
P020



Anthracite  
P021

# General

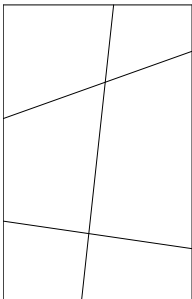
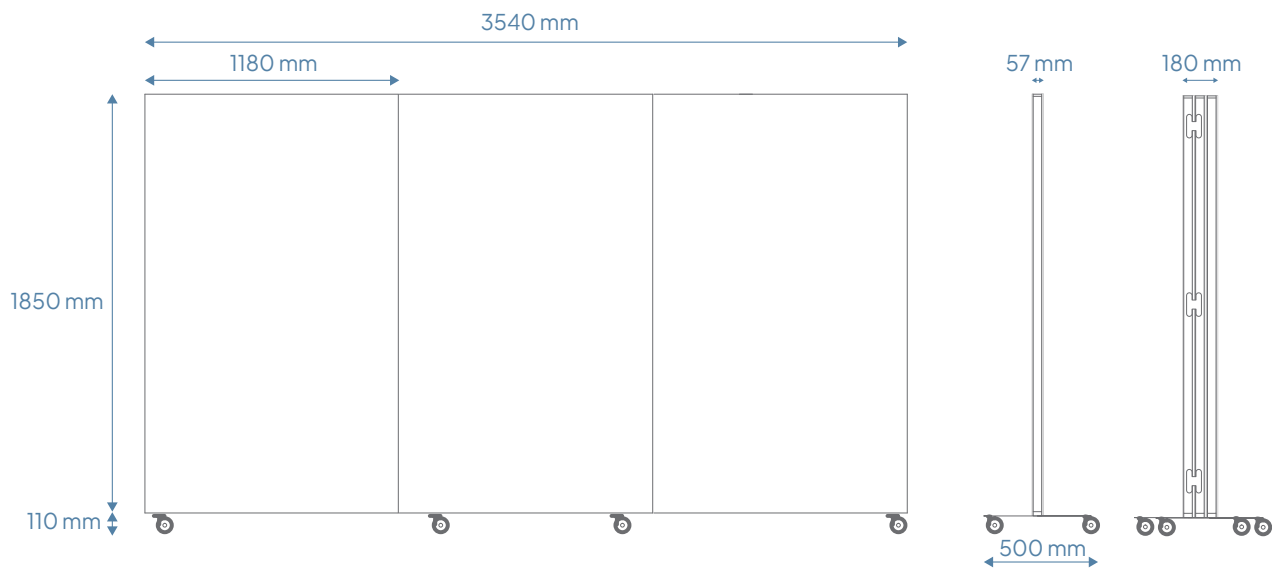
Think big because you can! The 3-part version of this mobile folding wall has a writing surface of up to 3.5 meters wide. Each part can accommodate 2 panels (front and back) with the choice of:

- Enamel writing surface. Standardly available in white enamel (W); choose the corresponding article number and surface code for a different surface (see p. 4).
- A PET felt acoustic panel with a choice of 21 colors (see p. 29) and optional printing (only on White - P001) or the V-cut pattern DP01.



Size (cm)	Article number	Gross weight	Nett weight
196,5 x 118	14013.307*	Frame Harmonica Workwall, 1-piece	43,15
196,5 x 236	14013.308*	Frame Harmonica Workwall, 2-pieces	83,10
196,5 x 354	14013.310*	Frame Harmonica Workwall, 3-pieces	123,00
185 x 118	16001.199	Enamel writing surface	26,00
185 x 118	11208.199 [color code]	PET felt panel	14,00
185 x 118	11208.198 [color code] [cut-out code]	PET felt panel, including pattern	± 13,80
185 x 118	11208.197	PET felt panel (White - P001), including printing	14,00

\* Frame excluding panels. The panels (2 per frame part) need to be ordered separately.



DP01

# Technical

Whiteboard panel

Properties:	- Magnetic and dry-erase - Suitable for very intensive use
Thickness:	7 mm
Installation:	TÜV-certified magnetic mounting system, on the frame
Warranty:	2 years
Surface Warranty:	Lifetime warranty on writability and dry erasing



# Technical

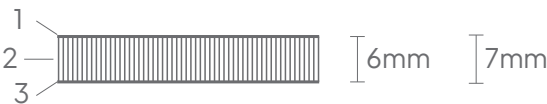
PET felt panel

Properties:	- Acoustic - Magnetic for glass board magnets
Thickness:	7 mm
Installation:	Magnetic mounting system, on the frame
Mounting:	Velcro
Warranty:	2 years
Optional V-cut pattern:	4.5 mm deep, ± 8.5 mm wide
Warranty:	2 years
Surface Warranty:	Lifetime warranty on writability and dry erasing

# Construction

Whiteboard panel

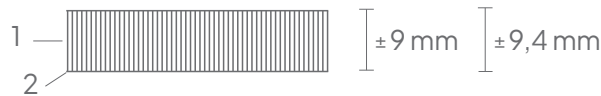
1. Surface:	1. Surface: 0.4mm Enamel steel (Indoor Air Quality Certified to SCS-EC10.3-2014 v4.0)
2. Carrier:	2. Carrier: 9mm MDF (FSC 70%)
3. Backing:	3. Backing: 0.4mm galvanized steel sheet
4. Finishing:	4. Finishing: White or black lacquered edges



# Construction

PET felt panel

1. Surface:	PET felt panel, approximately 9 mm thick
2. Backing:	0.4 mm galvanized steel sheet



## Construction

### Frame components

<b>Frame</b>	<ul style="list-style-type: none"><li>- Pine wood outer frame, black lacquered</li><li>- Poplar wood inner frame, unlacquered</li><li>- 6 or 3 robust hinges (for 3-part or 2-part frame)</li></ul>
<b>Base</b>	Black powder-coated steel
<b>Wheels</b>	Per frame part: 2 robust black wheels, one of which is brake-equipped
<b>Magnetic strips for mounting</b>	14 pieces
<b>Panels</b>	8 pieces

## Packaging

### Whiteboard panel

<b>Type:</b>	Crate
<b>Content:</b>	Chameleon whiteboard panel
<b>Packaging unit:</b>	1 unit
<b>Materials:</b>	Wood, corrugated cardboard, foam buffer
<b>Dimensions:</b>	1890 x 1230 x 110 mm

## Packaging

### PET felt panel

<b>Type:</b>	Shrink wrap
<b>Content:</b>	Chameleon PET felt panel
<b>Packaging unit:</b>	1 unit
<b>Materials:</b>	Shrink wrap, corrugated cardboard, EPS bumper
<b>Dimensions:</b>	1890 x 1230 x 110 mm

## Packaging

### Frame

<b>Type:</b>	Pallet / shrink wrap
<b>Content:</b>	Harmonica Workwall frame
<b>Packaging unit:</b>	1 unit
<b>Materials:</b>	Wooden package, shrink wrap
<b>Pallet dimension:</b>	1300 x 2100 mm