

Chameleon Creative V-Layer Panels

Specifications



Colours

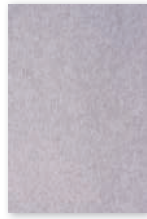
The 9mm PET felt from Chameleon Creative Panels is dyed-through. The color is also visible in the cutout. We have selected 21 colors, with a strong representation of gray tones and brown tones.



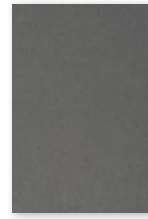
White
P001



Dusty white
P002



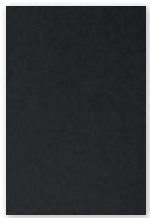
White marble
P003



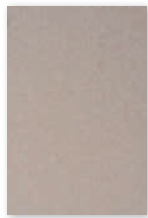
Calm grey
P004



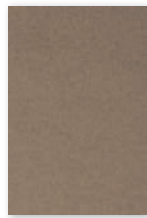
Rough grey
P005



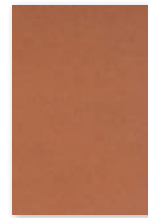
Black lava
P006



Flat white
P007



Hare
P008



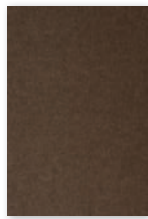
Canyon
P009



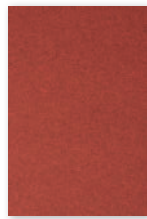
Turmeric
P010



Rust
P011



Tree bark
P012



Magma
P013



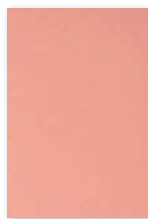
Polar ice
P014



Light blue
quartz
P015



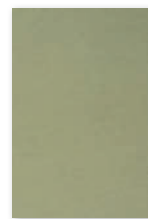
Dusk
P016



Pink rose
P017



Garnet
P018



Iguana
P019



Ocean green
P020

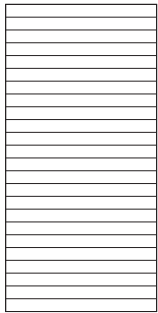


Anthracite
P021

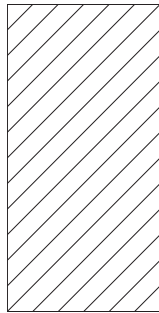
General

Size (cm) (total m ²)	Article number	Cut-out code (optional)	Number of panels	Gross weight	Nett weight
118x58 (2,74)	11210.160 *	VL01	4	± 11 kg	± 10 kg
118x58 (2,74)	11210.161 *	VL02	4	± 11 kg	± 10 kg
118x58 (2,74)	11210.162 *	VL03	4	± 11 kg	± 10 kg
118x58 (2,74)	11210.163 *	VL04	4	± 11 kg	± 10 kg
118x58 (2,74)	11210.164 *	VL05	4	± 11 kg	± 10 kg
118x58 (2,74)	11210.165 *	VL06	4	± 11 kg	± 10 kg
118x58 (2,74)	11210.166 *	VL07	4	± 11 kg	± 10 kg
118x58 (2,74)	11210.167 *	VL08	4	± 11 kg	± 10 kg
118x58 (2,74)	11210.168 *	VL09	4	± 11 kg	± 10 kg
118x58 (2,74)	11210.169 *	VL10	4	± 11 kg	± 10 kg

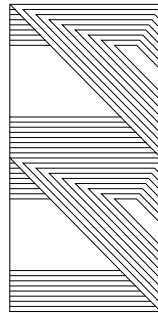
* Provide the color code of the front layer first with the article number, followed by the color code of the back layer, in the request for a quotation or order: [article number + color front + color back].



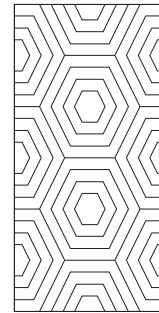
VL01



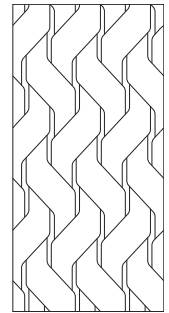
VL02



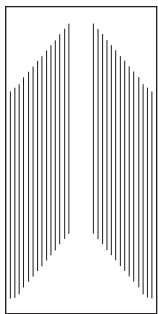
VL03



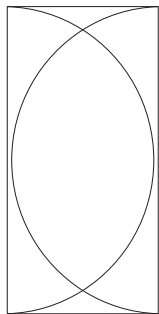
VL04



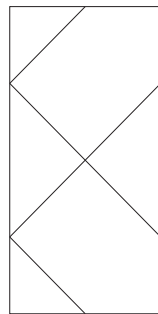
VL05



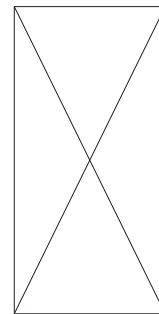
VL06



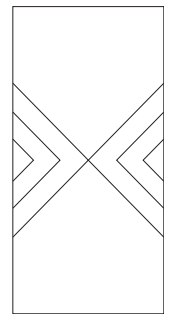
VL07



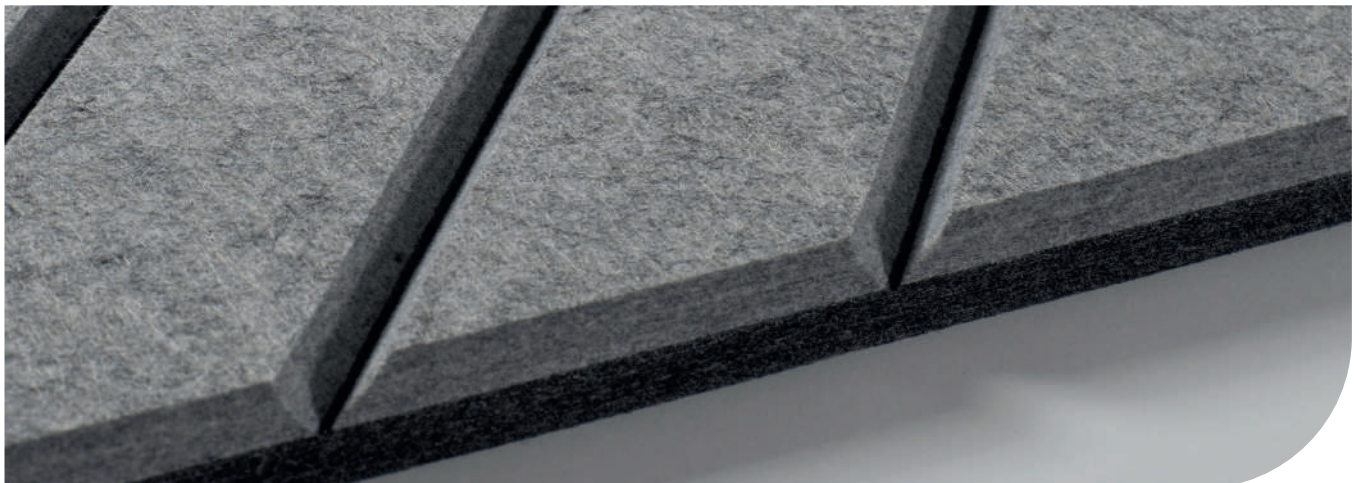
VL08



VL09



VL10

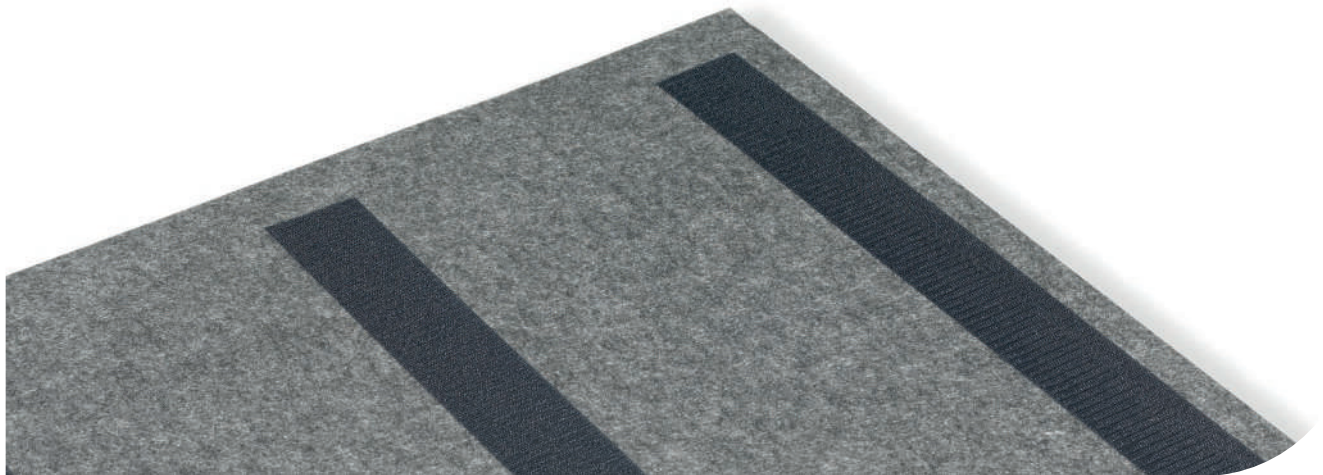
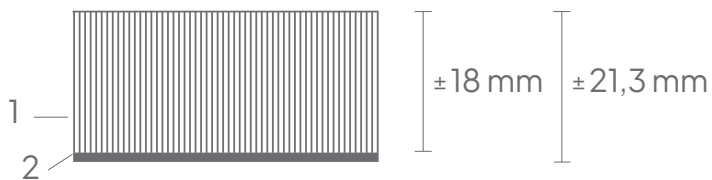


Technical

Material:	Consists of 100% recyclable Polyethylene terephthalate, including a portion from recycled PET bottles.
Properties:	Acoustic.
Thickness:	Approximately 21.3 mm (2x9 mm bonded, including suspension hardware).
Cutout:	Features a 14 mm deep v-cut pattern, at a 30-degree angle.
Finish:	Edges are finished with a bevel-cut.
Acoustic value:	NRC: 0.5 (estimate, test results not yet available).
Fire resistance:	EN13501: B-s1, d0.
Installation:	Velcro.
Warranty:	2-year warranty.

Technical

1. Surface:	PET felt panel, approximately 18 mm thick
2. Mounting materials:	Velcro, approximately 3.3 mm thick



Packaging

Type:	Cardboard
Contents:	4 Chameleon Creative V-Layer Panels, assembly manual
Packaging unit:	1 box
Materials:	Corrugated cardboard, bubble wrap
Dimensions:	Approximately 210 x 620 x 1220 mm